

# Appendix

## Oklahoma's Vital Statistics

**POPULATION, 2010:**

3,751,351 (28th most populous state)

**Most populous county:**

Oklahoma County, 718,633

**Least populous county:**

Cimarron County, 2,475

**Largest Cities:**

Oklahoma City, Tulsa, Norman, Broken Arrow,  
Lawton, Edmond, Moore, Midwest City, Enid,  
Stillwater

**LOCATION:**

Between 94° 29' and 103° west longitude  
Between 33° 39' and 37° north latitude

**LAND AREA:**

69,903 square miles (18th largest state)

**Largest county:**

Osage County, 2,304 square miles

**Smallest county:**

Marshall County, 427 square miles

**DISTANCES:**

464 miles east to west  
320 miles north to south

**NUMBER OF LAND REGIONS: 10****LOCATION WITHIN UNITED STATES:**

South central

**TIME ZONE:** Central**GEOGRAPHIC CENTER OF THE STATE:**

In Oklahoma County, 8 miles north of  
Oklahoma City

**BORDERING STATES:**

Colorado, Kansas, Texas, Missouri,  
Arkansas, New Mexico

**NUMBER OF COUNTIES: 77****AVERAGE ELEVATION:**

1,300 feet above sea level

**Highest point:**

Black Mesa, 4,973 feet above sea level

**Lowest point:**

Little River flood plain, 287 feet above sea level

**HIGHEST TEMPERATURE:**

120° Fahrenheit, on July 18, 1936, at Alva; on  
July 19, 1936, and August 12, 1936, at Altus, on  
August 12, 1936, at Poteau; on July 26, 1943, at  
Tishomingo; and on July 27, 1994, at Tipton

**LOWEST TEMPERATURE:**

-31° Fahrenheit, on February 10, 2011, at  
Nowata

**ADMITTED TO UNION:**

November 16, 1907 (46th state)

**NICKNAMES:**

The Sooner State, Boomer's Paradise

**CAPITAL:** Oklahoma City**OLDEST TOWN:** Vinita, 1871

# Appendix II

## Oklahoma's Symbols



**AMPHIBIAN**  
Bullfrog  
(adopted 1997)

**ANIMAL**  
Bison  
(1972)

**ANTHEM**  
"Oklahoma!"  
by Rodgers and Hammerstein  
(1953)

**BEVERAGE**  
Milk  
(1985)

**BIRD**  
Scissor-tailed flycatcher  
(1951)



**BUTTERFLY**  
Black swallowtail  
(1996)

**CARTOON CHARACTER**  
GUSTY  
created by former  
Tulsa weatherman  
Don Woods  
(2005)

**CHILDREN'S SONG**  
"Oklahoma, My Native Land"  
by Martha Kemm Barrett  
(1996)

**COLORS**  
Green and white  
(1915)



**COUNTRY AND WESTERN SONG**  
"Faded Love"  
by John Willis and Bob Wills  
(1988)

**CRYSTAL**  
Hourglass selenite crystal  
(2005)

**FISH**  
White (or sand) bass  
(1974)

**FLORAL EMBLEM**  
Mistletoe  
(1893)

**FLOWER**  
Oklahoma rose  
(2004)



**FOLK DANCE**

Square dance  
(1988)

**FOLK SONG**

"Oklahoma Hills"  
by Woody Guthrie and  
Jack Guthrie  
(2001)

**FOSSIL**

*Saurophaganax maximus*  
(2000)

**FUR-BEARING ANIMAL**

Raccoon  
(1989)

**FRUIT**

Strawberry  
(2005)

**GAME ANIMAL**

White-tailed deer  
(1989)

**GAME BIRD**

Wild turkey  
(1989)

**GRASS**

Indian grass  
(1972)



**INSECT**

Honeybee  
(1992)

**MOTTO**

*Labor Omnia Vincit*  
("Labor Conquers All Things")  
(1893)

**MUSICAL INSTRUMENT**

Fiddle  
(1984)

**PERCUSSIVE MUSICAL INSTRUMENT**

Drum  
(1993)

**POEM**

"Howdy Folks"  
by David Randolph Milsten  
(1973)

**REPTILE**

Mountain boomer or collared  
lizard (1969)

**ROCK**

Rose rock (Barite rose)  
(1968)

**ROCK SONG**

"Do You Realize?"  
The Flaming Lips  
(2009)



**SOIL**

Port silt loam  
(1987)

**SONG**

"Oklahoma!"  
by Rodgers and Hammerstein  
(1953)

**THEATRE**

Lynn Riggs Players of  
Oklahoma, Inc.  
(1961)

**TREE**

Redbud  
(1937)

**VEGETABLE**

Watermelon  
(2007)

**WALTZ**

"Oklahoma Wind"  
by Dr. Dale J. Smith  
(1982)

**WESTERN BAND**

The Sounds of the Southwest  
(1997)

**WILDFLOWER**

Indian Blanket  
(1986)

# Appendix

## Oklahoma's Counties

COUNTY	YEAR FORMED	2010 POPULATION	COUNTY SEAT	NAMED FOR
Adair	1907	22,683	Stilwell	Cherokee Adair family
Alfalfa	1893	5,642	Cherokee	Governor William "Alfalfa Bill" Murray
Atoka	1907	14,182	Atoka	Choctaw leader Atoka
Beaver	1890	5,636	Beaver	Beaver River
Beckham	1907	22,119	Sayre	Kentucky Governor John C. W. Beckham
Blaine	1890	11,943	Watonga	U.S. Senator James Gillespie Blaine
Bryan	1907	42,416	Durant	William Jennings Bryan
Caddo	1901	29,600	Anadarko	Caddo tribe
Canadian	1889	115,541	El Reno	Canadian River
Carter	1907	47,557	Ardmore	Ben W. Carter, prominent early-day family
Cherokee	1907	46,987	Tahlequah	Cherokee tribe
Choctaw	1907	15,205	Hugo	Choctaw tribe
Cimarron	1907	2,475	Boise City	Cimarron River
Cleveland	1889	255,755	Norman	President Grover Cleveland
Coal	1907	5,925	Coalgate	The coal deposits in area
Comanche	1901	124,098	Lawton	Comanche tribe
Cotton	1912	6,193	Walters	Cotton grown in the area
Craig	1907	15,029	Vinita	Cherokee leader Granville Craig
Creek	1907	69,967	Sapulpa	Creek tribe
Custer	1892	27,469	Arapaho	General George Armstrong Custer
Delaware	1907	41,487	Jay	Delaware District of Cherokee Nation
Dewey	1892	4,810	Taloga	Admiral George Dewey
Ellis	1907	4,151	Arnett	Albert H. Ellis, member of constitutional convention

<b>COUNTY</b>	<b>YEAR FORMED</b>	<b>2010 POPULATION</b>	<b>COUNTY SEAT</b>	<b>NAMED FOR</b>
Garfield	1893	60,580	Enid	President James A. Garfield
Garvin	1907	27,576	Pauls Valley	Chickasaw leader Samuel Garvin
Grady	1907	52,431	Chickasha	Henry W. Grady of Georgia
Grant	1893	4,527	Medford	President U. S. Grant
Greer	1896	6,239	Mangum	Texas Lt. Governor John Greer
Harmon	1909	2,922	Hollis	Ohio Governor Judson Harmon
Harper	1893	3,685	Buffalo	Oscar G. Harper, clerk of constitutional convention
Haskell	1907	12,769	Stigler	Charles N. Haskell, member of constitutional convention and later governor
Hughes	1907	14,003	Holdenville	W. C. Hughes, member of constitutional convention
Jackson	1907	26,446	Altus	Confederate General Thomas (Stonewall) Jackson
Jefferson	1907	6,472	Waurika	President Thomas Jefferson
Johnston	1907	10,957	Tishomingo	Douglas H. Johnston, governor of Chickasaw Nation
Kay	1893	46,562	Newkirk	Originally county "K," changed to word Kay
Kingfisher	1890	15,034	Kingfisher	King Fisher, an early settler
Kiowa	1901	9,446	Hobart	Kiowa tribe
Latimer	1907	11,154	Wilburton	James S. Latimer, member of constitutional convention
Le Flore	1907	50,384	Poteau	Choctaw Le Flore family
Lincoln	1891	34,273	Chandler	President Abraham Lincoln
Logan	1890	41,848	Guthrie	General John Alexander Logan
Love	1907	9,423	Marietta	Overton Love, Chickasaw judge
Major	1907	7,527	Fairview	John C. Major, member of constitutional convention
Marshall	1907	15,840	Madill	Maiden name of mother of constitutional convention delegate
Mayes	1907	41,259	Pryor	Cherokee Chief Samuel H. Mayes's family
McClain	1907	34,506	Purcell	Charles M. McClain, member of constitutional convention
McCurtain	1907	33,151	Idabel	Choctaw McCurtain family
McIntosh	1907	20,252	Eufaula	Creek McIntosh family
Murray	1907	13,488	Sulphur	William "Alfalfa Bill" Murray, president of constitutional convention and later governor

<b>COUNTY</b>	<b>YEAR FORMED</b>	<b>2010 POPULATION</b>	<b>COUNTY SEAT</b>	<b>NAMED FOR</b>
Muskogee	1907	70,990	Muskogee	Muscogee Creek tribe
Noble	1893	11,561	Perry	U.S. Secretary of the Interior John W. Noble
Nowata	1907	10,536	Nowata	Delaware word for “welcome” or sign saying town had no water
Okfuskee	1907	12,191	Okemah	Creek town in Alabama
Oklahoma	1890	718,633	Oklahoma City	Choctaw words meaning “people” and “red”
Okmulgee	1907	40,069	Okmulgee	Creek word meaning “boiling water”
Osage	1907	47,472	Pawhuska	Osage Nation
Ottawa	1907	31,848	Miami	Ottawa tribe
Pawnee	1893	16,577	Pawnee	Skidi Pawnee tribe
Payne	1890	77,350	Stillwater	Boomer leader David L. Payne
Pittsburg	1907	45,837	McAlester	Pittsburgh, Pennsylvania
Pontotoc	1907	37,492	Ada	Pontotoc Creek in Chickasaw homeland in Mississippi
Pottawatomie	1891	69,442	Shawnee	Potawatomie tribe
Pushmataha	1907	11,572	Antlers	Choctaw Chief Pushmataha and Pushmataha District of Choctaw Nation
Roger Mills	1892	3,647	Cheyenne	U.S. Senator Roger Q. Mills of Texas
Rogers	1907	86,905	Claremore	Clement V. Rogers, member of constitutional convention
Seminole	1907	25,482	Wewoka	Seminole tribe
Sequoyah	1907	42,391	Sallisaw	Sequoyah, Cherokee who invented Cherokee syllabary
Stephens	1907	45,048	Duncan	Congressman John H. Stephens of Texas
Texas	1907	20,640	Guymon	U.S. state
Tillman	1907	7,992	Frederick	U.S. Senator Benjamin Tillman of South Carolina
Tulsa	1907	603,403	Tulsa	Tulsey Town, Alabama, an old Creek settlement
Wagoner	1907	73,085	Wagoner	Bailey P. Waggoner, railroad attorney
Washington	1907	50,976	Bartlesville	President George Washington
Washita	1892	11,629	Cordell	Washita River
Woods	1893	8,878	Alva	Sam Wood of Kansas
Woodward	1893	20,081	Woodward	B. W. Woodward of Santa Fe Railroad Company

# Appendix IV

## Oklahoma's Governors

### TERRITORIAL GOVERNORS

GOVERNOR	POLITICAL PARTY	TERM OF OFFICE
George Washington Steele	Republican	1890-1891
Robert Martin	Republican	1891-1892
Abraham Jefferson Seay	Republican	1892-1893
William Cary Renfrow	Democrat	1893-1897
Cassius McDonald Barnes	Republican	1897-1901
William Miller Jenkins	Republican	1901
William C. Grimes	Republican	1901
Thompson Benton Ferguson	Republican	1901-1906
Frank Frantz	Republican	1906-1907

### STATE GOVERNORS

GOVERNOR	POLITICAL PARTY	TERM OF OFFICE
Charles Nathaniel Haskell	Democrat	1907-1911
Lee Cruce	Democrat	1911-1915
Robert Lee Williams	Democrat	1915-1919
James Brooks Ayers Robertson	Democrat	1919-1923

<b>GOVERNOR</b>	<b>POLITICAL PARTY</b>	<b>TERM OF OFFICE</b>
Jack Callaway Walton	Democrat	1923
Martin Edwin Trapp	Democrat	1923-1927
Henry Simpson Johnston	Democrat	1927-1929
William Judson Holloway	Democrat	1929-1931
William Henry Murray	Democrat	1931-1935
Ernest Whitworth Marland	Democrat	1935-1939
Leon Chase Phillips	Democrat	1939-1943
Robert Samuel Kerr	Democrat	1943-1947
Roy Joseph Turner	Democrat	1947-1951
Johnston Murray	Democrat	1951-1955
Raymond Dancel Gary	Democrat	1955-1959
James Howard Edmondson	Democrat	1959-1963
Henry Louis Bellmon	Republican	1963-1967
Dewey Follett Bartlett	Republican	1967-1971
David Hall	Democrat	1971-1975
David Lyle Boren	Democrat	1975-1979
George Patterson Nigh	Democrat	1979-1987
Henry Louis Bellmon	Republican	1987-1991
David Lee Walters	Democrat	1991-1995
Francis Anthony Keating	Republican	1995-2003
Brad Henry	Democrat	2003-2011
Mary Fallin	Republican	2011-2019
John Kevin Stitt	Republican	2019-



# Oklahoma's Federally Recognized Indian Tribes

**TRIBE****TRIBAL HEADQUARTERS**

Absentee Shawnee Tribe	Shawnee
Alabama Quassarte Tribal Town	Wetumka
Apache Tribe	Anadarko
Caddo Nation	Binger
Cherokee Nation	Tahlequah
Cheyenne & Arapaho Tribes	Concho
Chickasaw Nation	Ada
Choctaw Nation	Durant
Citizen Potawatomi Nation	Shawnee
Comanche Nation	Lawton
Delaware Nation	Anadarko
Delaware Tribe of Indians	Bartlesville
Eastern Shawnee Tribe	Seneca, Missouri
Fort Sill Apache Tribe	Apache

**TRIBE****TRIBAL HEADQUARTERS**

Iowa Tribe	Perkins
Kaw Nation	Kaw City
Kialegee Tribal Town	Wetumka
Kickapoo Tribe	McCloud
Kiowa Tribe	Carnegie
Miami Nation	Miami
Modoc Tribe	Miami
Muscogee (Creek) Nation	Okmulgee
Osage Nation	Pawhuska
Otoe-Missouria Tribe	Red Rock
Ottawa Tribe	Miami
Pawnee Nation	Pawnee
Peoria Tribe of Indians	Miami
Ponca Nation	Ponca City
Quapaw Tribe	Quapaw
Sac & Fox Nation	Stroud
Seminole Nation	Wewoka
Seneca-Cayuga Tribe	Miami
Shawnee Tribe	Miami
Thlopthlocco Tribal Town	Okemah
Tonkawa Tribe	Tonkawa
United Keetoowah Band of Cherokees	Tahlequah
Wichita & Affiliated Tribes	Anadarko
Wyandotte Nation	Wyandotte
Yuchi (Euclidean) Tribe of Indian (Historic Tribe that has filed for federal recognition)	Sapulpa

# Appendix VI

## Oklahoma's Colleges and Universities

SCHOOL	FOUNDED	CITY	TYPE
Bacone College	1880	Muskogee	Private
Cameron University	1908	Lawton, Duncan	Public
Carl Albert State College	1933	Poteau, Sallisaw	Community college
Connors State College	1908	Warner, Muskogee	Community college
East Central University	1909	Ada	Public
Eastern Oklahoma State College	1920	Wilburton, McAlester, Idabel	Community college
Family of Faith College	1992	Shawnee	Private
Hillsdale Free Will Baptist College	1959	Moore	Private
Langston University	1897	Langston, Oklahoma City, Tulsa	Public
Mid-America Christian University	1953	Oklahoma City	Private
Murray State College	1908	Tishomingo	Community college
Northeastern Oklahoma A&M College	1919	Miami	Public
Northeastern State University	1851	Tahlequah, Broken Arrow, Muskogee	Public
Northern Oklahoma College	1901	Tonkawa, Enid, Stillwater	Community college
Northwestern Oklahoma State University	1897	Alva, Enid, Woodward	Public

<b>SCHOOL</b>	<b>FOUNDED</b>	<b>CITY</b>	<b>TYPE</b>
Oklahoma Baptist University	1906	Shawnee	Private
Oklahoma Christian University	1950	Oklahoma City	Private
Oklahoma City Community College	1970	Oklahoma City	Community college
Oklahoma City University	1904	Oklahoma City	Private
Oklahoma Panhandle State University	1909	Goodwell	Public
Oklahoma State University	1890	Stillwater, Tulsa, Oklahoma City, Okmulgee	Public
Oklahoma Wesleyan University	1909	Bartlesville	Private
Oral Roberts University	1963	Tulsa	Private
Phillips Theological Seminary	1906	Tulsa	Private
Redlands Community College	1938	El Reno	Community college
Rogers State University	1909	Claremore, Bartlesville, Pryor	Public
Rose State College	1970	Midwest City	Community college
St. Gregory's University	1875	Shawnee	Private
Seminole State College	1931	Seminole	Community college
Southeastern Oklahoma State University	1909	Durant, Idabel	Public
Southern Nazarene University	1899	Bethany	Private
Southwestern Christian University	1946	Bethany	Private
Southwestern Oklahoma State University	1901	Weatherford, Sayre	Public
Tulsa Community College	1968	Tulsa	Community college
University of Central Oklahoma	1890	Edmond	Public
University of Oklahoma	1890	Norman, Tulsa	Public
University of Science & Arts of Oklahoma	1908	Chickasha	Public
University of Tulsa	1894	Tulsa	Private
Western Oklahoma State College	1926	Altus	Community college

# An Atlas of Oklahoma



# Oklahoma in the World



# An Atlas of Oklahoma







# An Atlas of Oklahoma



## Oklahoma's Geographic Regions

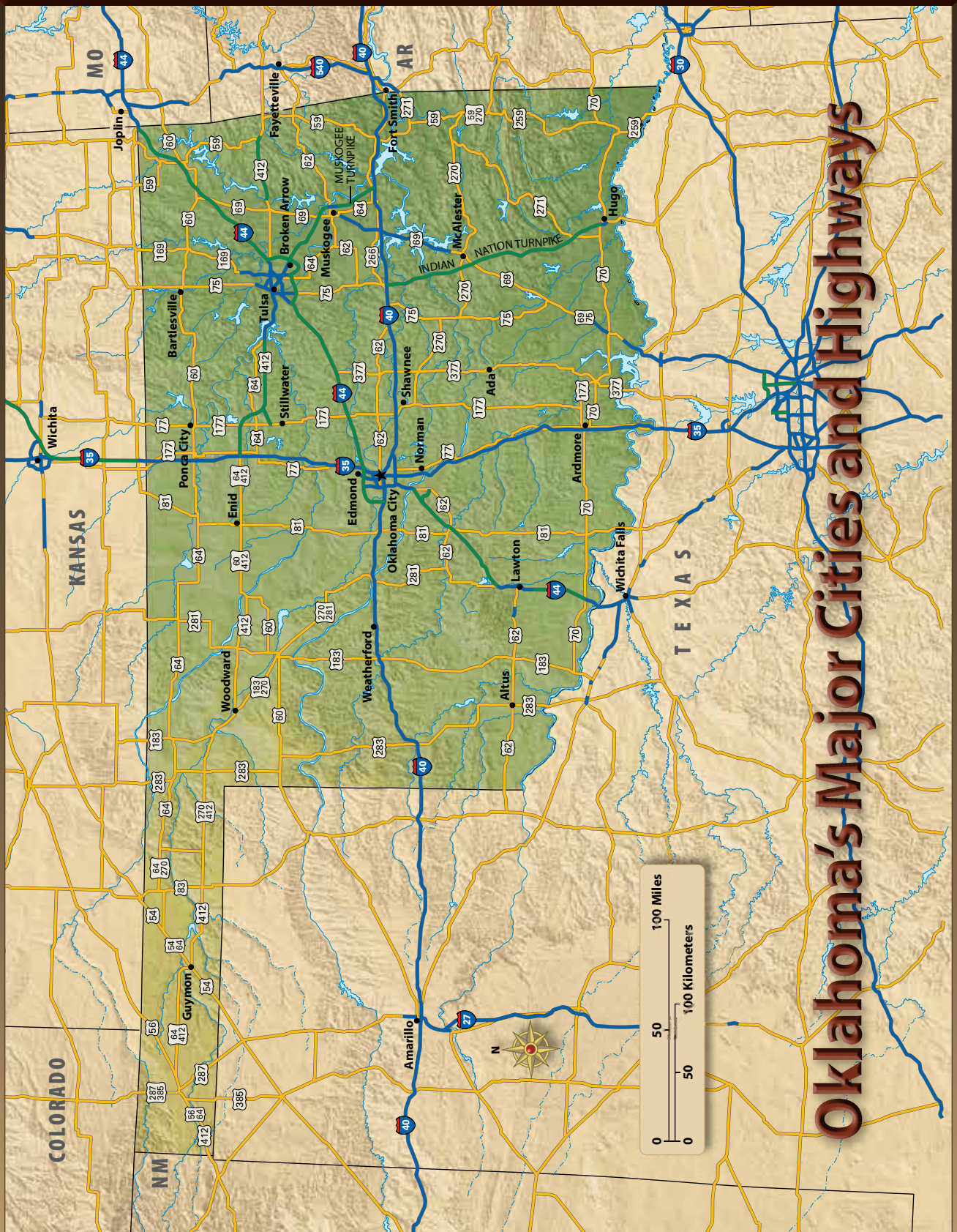
# An Atlas of Oklahoma



## Oklahoma's Rivers and Lakes

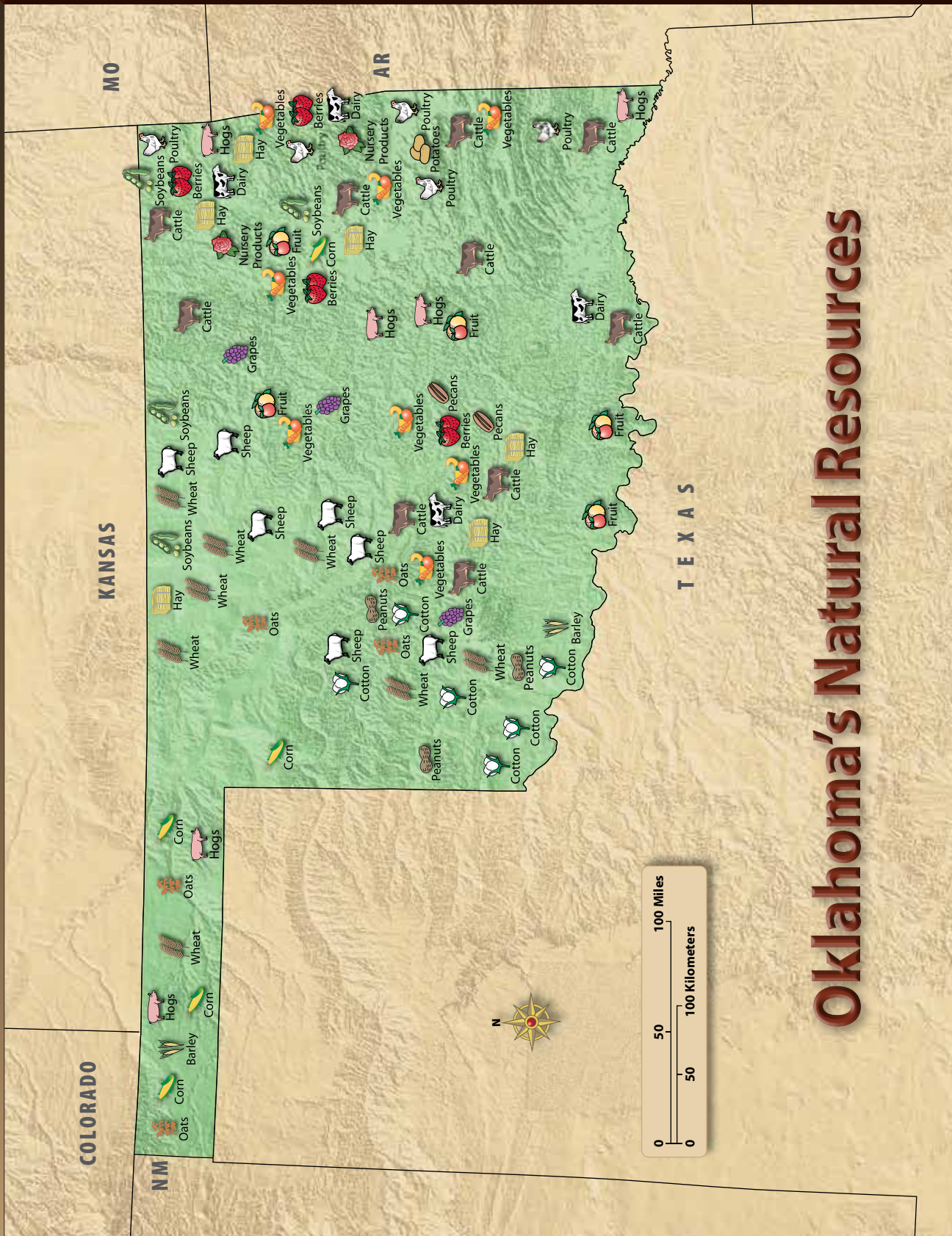


# An Atlas of Oklahoma



## Oklahoma's Major Cities and Highways

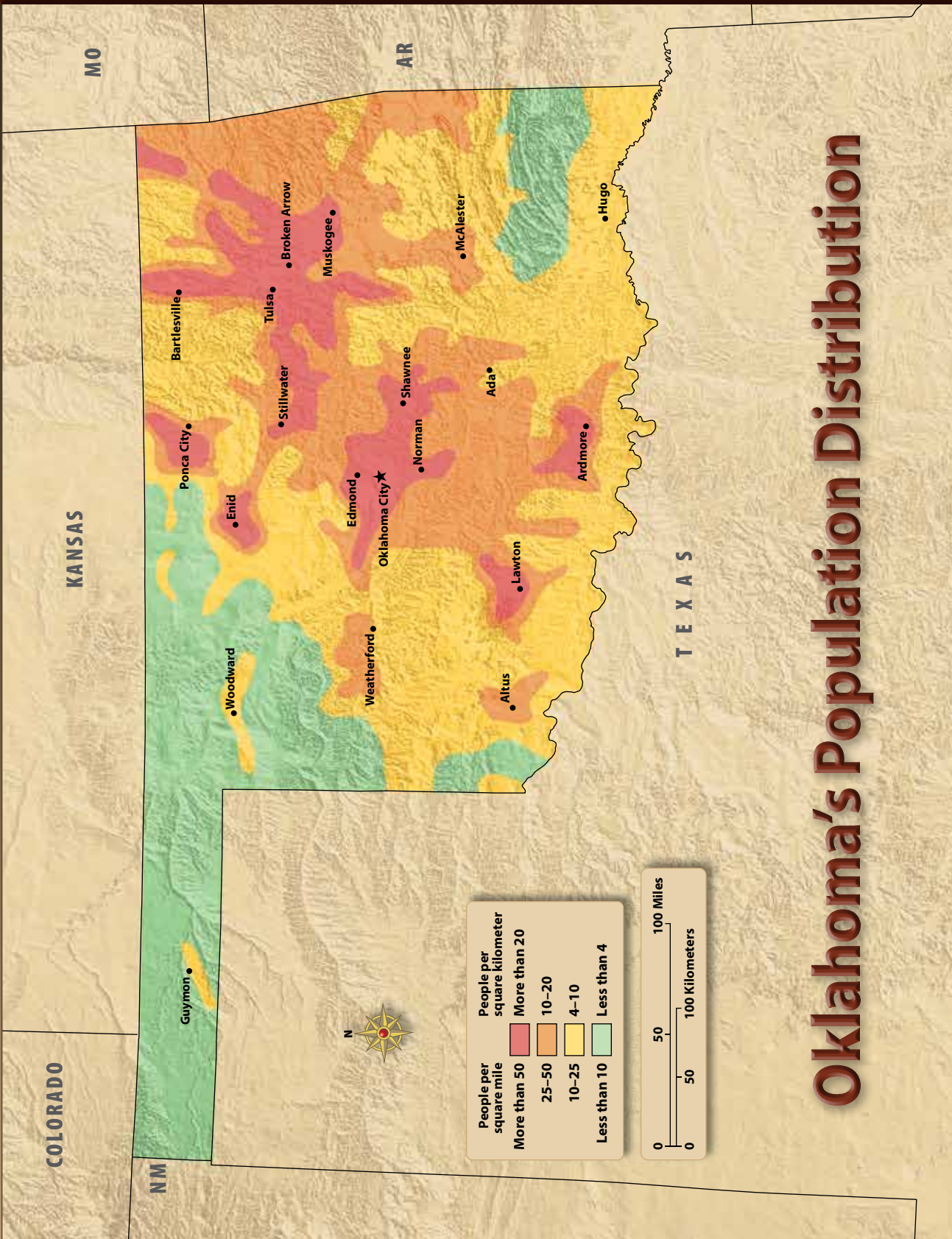
# An Atlas of Oklahoma



## Oklahoma's Natural Resources



# An Atlas of Oklahoma



## Oklahoma's Population Distribution

# Glossary

## A

- abolitionist** one who was against slavery (8)
- academy** a school similar to a high school of today (6)
- ad valorem taxes** taxes that are based on the value of the item being taxed (19)
- affirmative action** programs designed to increase the number of minorities in the workplace (16)
- alliance** a close association to advance the common interests of the parties (3)
- allotment** a specified portion, as of land (5)
- amendment** an addition to a document, such as a constitution (12)
- American Indian Movement (AIM)** a militant American Indian organization organized in the late 1960s to gain Indian rights (16)
- annex** to add on, such as adding territory to an existing town, city, or state (7)
- annuity** a sum of money paid annually or at some other regular interval (6)
- anthropologist** a scientist who studies artifacts, fossils, cave drawings, trails, and oral history to learn the culture of a group and how groups of people lived (2)
- appropriate** to set aside a certain amount of money for a specific purpose (4)
- aquifer** an underground basin that holds water that seeps down from rainfall, lakes, and ponds (1)
- Arbuckle Mountains** a geographic region in the south-central part of the state (1)
- archaeologist** a scientist who studies ancient cultures by examining what they have left behind (2)
- armistice** a temporary stop to fighting (13)
- artifact** an item made or used by people; includes pottery, tools, bone, jewelry, and paintings (2)
- assimilation** the process of one group becoming part of another (5)
- atlatl** a short wooden shaft with a hook at the end that was used to throw darts with more force and accuracy (2)

## B

- baby boomer** name given to a child born between the years 1946 and 1964 (15)
- barnstormer** a pilot who gave airplane rides and flying and stunt exhibitions (14)
- barter** to trade one item for another (2)
- basin** a deep sunken area (1)
- bicameral** a legislature that has two houses; in Oklahoma, the Legislature consists of a senate and a house of representatives (12)
- bill** a proposed law (19)
- biomass** renewable plant materials and animal waste (17)
- boll weevil** an insect that attacks the boll of the cotton plant (12)
- boomer** one who took part in the land "booms" of the late 1800s when western land was opened to settlement (11)
- boycott** occurs when people refuse to buy certain items or take certain actions until specific conditions are met (16)
- budget** a plan for receiving and spending money (19)
- buffalo soldiers** the name given to the black troops of the 10th Cavalry by the Native Americans (9)
- buffer zone** a neutral area between two larger areas with different uses (7)
- butte** an isolated hill or mountain with steep sides; smaller than a mesa (1)

## C

- calumet** a long ceremonial pipe used by the Native Americans (3)
- caravan** a procession of wagons traveling in single file (7)
- cartographer** a mapmaker (3)
- cede** to turn over, often by treaty (5)
- charter** official permission to operate (12)
- civil law** law that involves situations where people



have been harmed and some kind of financial award can help resolve the problem (19)

**Civil Rights Act of 1964** federal legislation that required equal employment opportunity without regard to race, religion, and national origin (16)

**climate** the average weather of an area over a long period of time, such as 25-30 years (1)

**Cold War** name given to the period of hostilities after World War II between the United States and the Soviet Union (15)

**collective bargaining** negotiations between a labor union and an employer over wages, benefits, and working conditions (14)

**colony** a group of people who settle in another land but who are still under the rule of their native land (3)

**Compromise of 1850** legislation by which California was admitted as a free state, the Texas-New Mexico boundary was settled, the northern boundary of the Texas Panhandle was set at 36° 30' N latitude, the slave trade was banned in the District of Columbia, the fugitive slave law was strengthened, and the territories of New Mexico and Utah were organized without mention of slavery (8)

**confederacy** an alliance (4)

**Confederate States of America** the government formed by those southern states that seceded from the Union in 1861 (8)

**conquistador** a Spanish conqueror (3)

**constitution** a document that sets up the framework of a government (or any other organization) (4)

**contract** a formal, legally binding agreement between two or more parties (7)

**cooperative** an organization owned by and operated for those using its services (13)

**council of defense** a state organization during World War I to coordinate publicity, food and fuel conservation, military preparedness, and campaigns for Liberty Bonds and war savings stamps (13)

**county seat** the city or town where the county government is located (19)

**credit** the ability to buy goods now and pay for the items over a period of time (14)

**criminal law** law that involves investigating crimes, prosecuting defendants, and holding perpetrators accountable for their actions; persons found guilty

of criminal offenses usually receive jail or probationary sentences (19)

**culture** the way of life of a group of people; includes beliefs, traditions, music, art, and social institutions (18)

**Curtis Act** federal legislation that abolished tribal courts and made everyone in Indian Territory subject to federal law and the laws of Arkansas; forced the tribes to allot land or risk abolishment of tribal governments (11)

## D

**Dawes Severalty Act** federal legislation that dissolved tribal ownership of land, primarily in western Oklahoma, and gave specific amounts of land to each individual Indian; it also extended the protection of U.S. laws over the Indians (11)

**deregulation** the removal of government rules and regulations (16)

**desperado** a bold outlaw, especially in the western United States (6)

**destitute** suffering in extreme poverty (6)

**dictator** a ruler with complete control (15)

**dissenter** one who is in disagreement or opposition (13)

**diversity** a variety of different ideas, customs, skills, arts, foods, and beliefs (18)

**draft** compulsory enrollment for military service (13)

**drought** a long period without rainfall (1)

**drover** a trail driver (10)

**dugout** a house built half in the ground, half above (9)

**Dust Bowl** an area hard hit by a drought in the 1930s; included the western half of Kansas, southeastern Colorado, the Oklahoma Panhandle, the northern two-thirds of the Texas Panhandle, and northeastern New Mexico (14)

## E

**economy** a system that includes all the activities involved in the production, distribution, and consumption of goods and services (3)

**ecosystem** an interacting system of living organisms—plants, trees, animals, fish, and so on—and their nonliving environment (1)

**elevation** the height of a place above sea level (1)

**embargo** an action stopping all trade with a particular country (16)

**emigrant** one who leaves one's country to settle in another (6)

**Enabling Act** federal legislation, signed June 16, 1906, that provided for joining Indian Territory and Oklahoma Territory into the single state of Oklahoma, also called the Hamilton Statehood Bill (12)

**encroachment** a trespass or an intrusion without permission (4)

**environment** surroundings (1)

**epidemic** an outbreak of a contagious disease (4)

**erosion** the wearing away of land by the action of wind or water (1)

**ethnic group** a group of people who share common traditions, beliefs, and patterns of living that can include language, religion, customs, characteristics, history, and food (18)

**expedition** a journey for a specific purpose, such as exploration (3)

## F

**fossil fuel** a fuel formed in the ground from the remains of dead plants and animals; includes oil, natural gas, and coal (1)

**fossil** a trace or remains of living things (2)

**free state** a state that did not allow slavery (8)

**freedmen** former slaves (9)

**frontier** the area at the edge or just beyond a settled area (4)

## G

**garrison** a military post (9)

**geography** the study of Earth's physical features and how people interact with them (1)

**gerrymandering** the process of redrawing voting districts to give an unfair advantage to one political party (13)

**governor** the head of the executive branch of state government (12)

**grandfather clause** a clause that, to register to vote, required a person to prove he could read and write parts of the state constitution or was a descendant of a person who was eligible to vote on January 1, 1866; this clause virtually denied blacks the right to vote (13)

**Great Depression** a period of time in the 1930s when the United States and much of the world suffered under a severe economic downturn (14)

**guardianship** a situation where someone legally has the authority to make decisions for and care for and control all of the property of someone (8)

**guerrilla** a member of a small military group that harasses the enemy (8)

**Gypsum Hills** a geographic region in the western part of the state that covers a large area from the Kansas border to the far southwestern corner of the state (1)

## H

**headright** an interest reserved for each tribal member in the funds collected from mineral leases, sale of lands, etc. (13)

**High Plains** a geographic region of the state that includes the Panhandle and land along part of the western border of the state (1)

**Homestead Act of 1862** federal legislation that enabled citizens to acquire up to 160 acres of land by paying a filing fee, occupying the land for five years, and building a home and improvements (9)

**human rights** rights believed to belong to all people (6)

## I

**immigrant** one who moves to a new country to settle there (7)

**immunity** resistance (3)

**impeachment** the process of charging a public official with wrongdoing while that official is still in office (13)

**impressment** forcing U.S. sailors to serve in the British navy (5)

**Indian Removal Act** legislation passed in 1830 that forced the Indian tribes living east of the Mississippi River to move onto land west of the Mississippi (5)

**indict** to charge with a crime (14)

**inflation** an increase in the prices of goods and services, while purchasing power decreases (14)

**initiative** a political process where citizens can propose a law or constitutional amendment (12)

**interurban** a short railroad or electric trolley (12)

**irrigation** supplying water to land by artificial means (1)

**isthmus** a narrow strip of land connecting two larger land areas (3)

## J

**Jim Crow laws** laws that limited the rights of black people (12)

**jurisdiction** the range of actions over which a court has control or influence (10)

## K

**kickback** a bribe or illegal payment made to obtain business or help of some kind (17)

**Ku Klux Klan** a secret, racist organization that sought to keep political power in the hands of whites by using violence and intimidation; its members were anti-Catholic, anti-Jewish, anti-African American, and opposed to immigration and labor unions (14)

## L

**latitude** the distance north or south of the equator measured in degrees (1)

**lighthorseman** a tribal policeman (10)

**literacy** the ability to read and write (6)

**long hunter** a hunter gone for long periods of time (4)

**longitude** the distance east or west of the prime meridian measured in degrees (1)

**lottery** a contest whose winner is chosen by a drawing (5)

## M

**manifest destiny** Americans' desire to gain new land and to spread their beliefs and idealism (4)

**MAPS (Metropolitan Area Projects)** a capital improvement program begun in 1993 to revitalize downtown Oklahoma City (17)

**martial law** a temporary use of military rule when civilian authority breaks down (14)

**mesa** a large flat-topped but steep-sided landform (1)

**middleman** a trader who buys goods from producers and sells them to other traders or consumers (3)

**migrate** to move from one place to another (5)

**minority** a group of people who are a small part of a much larger group (6)

**mission** a building or compound belonging to a group sent out to do religious or charitable work (6)

**missionary** one who is sent on a religious mission (3)

**Missouri Compromise** an 1820 compromise by which Missouri was admitted as a slave state, Maine was admitted as a free state, and slavery was prohibited north of Missouri's southern border at 36° 30' N latitude (5)

## N

**nanotechnology** the manipulation of atoms and molecules to create new structures, devices, and systems (17)

**natural resources** those things found in nature that are useful to humans (1)

**negotiations** discussions between people who try to come to an agreement on something (6)

**neutral** to not take sides in a disagreement (8)

**New Deal** the name given to the series of laws passed during President Franklin D. Roosevelt's terms that were intended to deal with the conditions caused by the Great Depression (14)

**nomadic** wandering from place to place (2)

**normal school** a teacher-training institution (11)

**Northwest Passage** a hoped-for all-water route to Asia through the North American continent (3)

## O

**ordinance** a local law (13)

**Organic Act** federal legislation, signed May 2, 1890, that created Oklahoma Territory from western Indian Territory and No Man's Land (11)

**Organization of the Petroleum Exporting Countries (OPEC)** an organization founded in 1960 of several petroleum-producing countries to gain control over oil production and pricing (16)

**Ouachita Mountains** a geographic region in the southeastern part of the state (1)

**Ozark Plateau** a geographic region in the northeastern part of the state (1)

## P

**Pacific Railroad Act** federal legislation passed in 1862 authorizing the construction of a railroad and a telegraph line across the country (9)

**pandemic** something that occurs over a wide geographic area; was used to refer to the worldwide influenza epidemic of the late 1910s (13)

**partisan** describes strong, biased political backing (14)

**peacekeeping mission** the activity of keeping the peace by military forces (6)

**petrochemicals** chemicals derived from petroleum or natural gas (14)

**petroglyph** a picture or symbol that conveys an idea (2)

**pirogue** a canoe-shaped boat (4)

**plateau** an elevated, relatively level area (1)

**polygamy** having more than one wife (2)

**popular sovereignty** a process by which those living in a territory could decide for themselves on an issue, such as if they wanted slavery (8)

**powwow** an American Indian gathering to celebrate Indian heritage; often includes singing and dancing (18)

**Prairie Plains** a geographic region of the state to the west of the Ozark Plateau (1)

**prehistoric people** those who lived before recorded history (2)

**price parity** the point where prices received for farm products keep pace with the costs of other products and services to ensure a constant standard of living (16)

**progressive movement** a movement in the early 1900s that believed government was best equipped to correct the problems in society (12)

**prohibition** forbidding by law the making or selling of alcoholic beverages (12)

**protégé** a young person who receives experienced guidance (4)

**protohistoric** refers to the era between prehistoric and recorded history (2)

## Q

**quarantine** a restriction of people's or animals' movement to stop the spread of disease (10)

## R

**railhead** the end of a railroad line (10)

**rapproach** relationship (9)

**ratify** to formally approve something, such as a treaty (4)

**ration** to limit the supply of something (15)

**Reconstruction** the process of rebuilding the country after the Civil War (9)

**Red Bed Plains** a geographic region in the middle

of the state that extends from Kansas to Texas (1)

**Red River Plains** a geographic region in the southeastern part of the state that lies along the Red River (1)

**referendum** a procedure whereby citizens are able to vote on a law that affects them before that law goes into effect (12)

**renegade** a deserter (4) or an outlaw (9)

**reservation** an area set aside for use by a particular people (9)

**reserves** supplies that are known, but not yet produced (17)

**rider** an addition (11)

**rodeo** a competition among cowboys that usually includes roping, bronco riding, calf roping, and steer wrestling (18)

**royalty** a payment for the right to exploit a natural resource (10)

## S

**Sandstone Hills** a geographic region of the state just east of the Red Bed Plains region (1)

**secede** to break away, as a state breaking away from the Union (8)

**segregation** separating groups by race (10)

**seminary** a residential school (10)

**shaman** a wise medicine man (2)

**shelterbelt** a row of trees planted to anchor the soil and buffer the wind (14)

**sit-in** a type of demonstration that occurs when a group of people enter a public facility and refuse to leave until they are recognized or their demands are met (15)

**skirmish** a minor, short-term fight (3)

**slave state** a state that did permit slavery (8)

**sooner** one who crossed the starting line of a land run before the appointed time (11)

**squatter** one who settles on unoccupied land in order to gain title to it (11)

**states' rights** the principle that the rights and responsibilities of the states should take precedence over the rights and responsibilities of the federal government (8)

**station** a regular stopping place along a stagecoach line (7)

**stock market** the place where shares of ownership—stock—in corporations are bought and sold (14)

**strike** a work action that occurs when workers refuse to work until their demands are met (10)

**subscription school** an early school where parents paid a monthly fee, usually ranging from \$1 to \$2 (12)

**subsidy** a sum of money paid by the government to individuals, companies, or other groups needing help (14)

**subsistence** the minimum resources needed to support life (5)

**suburbs** a residential area on the edge of a city (15)

**suffrage** the right to vote (12)

**survey** to make a detailed map of an area, including its boundaries and elevation (6)

**syllabary** a group of symbols that stand for whole syllables (5)

## T

**tariff** a tax, often on imported goods (8)

**tax** an amount charged citizens and businesses by their governments—federal, state, local—to pay for services provided (13)

**tenant farmer** a farmer who cleared the land and planted a crop, but who did not own the land (10)

**terrorism** acts of violence aimed at demoralizing or intimidating others (17)

**Title IX** an amendment to the Civil Rights Act of 1964 that stated that any educational institution receiving federal funding was required to provide equal opportunities in educational programs and activities (16)

**topography** physical features of the land, such as mountains or plateaus (1)

**tornado** a severe windstorm caused when clashing air masses create funnels of winds that rotate counterclockwise (1)

**totem** an animal or bird whose spirit guided a Native American (2)

**township** an area consisting of 36 one-mile-square parcels of land called *sections*; each section contains 640 acres of land (11)

**transcontinental railroad** a railroad that spans the continent from ocean to ocean (7)

**treaty** a formal agreement between two or more nations (4)

**tributary** a stream or river that flows into a larger river (1)

## U

**Underground Railroad** a secret network of safe places for slaves to hide as they escaped to the North or Canada (8)

**urban sprawl** the unplanned, uncontrolled spread of urban development into areas on the edge of a city (17)

## V

**veto** to not approve or sign a bill into law (19)

**viceroy** a Spanish governor (2)

## W

**weather** a measure of the current conditions of the atmosphere; includes temperature, precipitation, and wind (1)

**Wichita Mountains** a geographic region in the middle of the state south of the Red Bed Plains (1)

**wildcatter** an oil-industry risk taker; one who drills in a doubtful or untapped area (1)

# Index

The purpose of the index is to help you locate information quickly. The index contains references to not only text, but also illustrations and maps. A page number with **m** before it indicates a map; a page number with **f** before it indicates a chart or graph; a page number with **p** before it indicates a photograph or illustration.

## A

- Abert, James, 175, 179
- abolitionists, 193, 194
- Absentee Shawnee Indians, 121, 231
- academies, Indian, 148
- Ada, 17, 326
- Adair, William Penn, 216
- Adams-Onís Treaty, 106-107
- ad valorem taxes, 507, 509
- affirmative action, 416
- Afghanistan, 449
- African-Americans, 280, 314, 484. *See also* blacks, segregation, slavery, slaves.
- Afton, 51, **p**51
- agencies, Indian, 223, 228
- agriculture, 19, 22, 23, 357, 455-456
  - and climate, 32-33
  - crops grown, 302, 303, 357, 422, 455
  - Dust Bowl, 370
  - grape and wine Industry, 455
  - and Made in Oklahoma Coalition, 455-456
  - and New Deal programs, 368
  - in postwar periods, 353
  - and tenancy system, 242, 368, 371
- agriculture, secretary of, 495
- Agriculture Adjustment Act, 368
- AIM, 418
- airports, 357-358, 360
- Alabaster Caverns, 8, **p**8, 11
- Albert, Carl, 401, **p**401
- Albert Pike Association, 340
- alcohol, 259, 310, 313. *See also* prohibition.
- Alderson, 256
- Alfalfa County, 105
- Alfred P. Murrah Federal Building, 443-445
- All-American Rejects, 457, 459
- Allen, Royal, 311
- alliance, 80
- allotments, land, 134, 263, 270
- al-Qaida, 449
- Altus, 396
- Altus Air Force Base, 386, 451-452
- Altus Junior College, 426
- Alva, 14, 288, 325, 388
- amendment, 313
- amendments to U.S. Constitution
  - 13th Amendment, 216
  - 14th Amendment, 216, 412
  - 15th Amendment, 216, 332
  - 18th Amendment, 345
  - 19th Amendment, 345
  - 26th Amendment, 416
- American Indians, 417-418, 458-459. *See also* Indians, specific tribes.
- American Indian Cultural Center and Museum, 477
- American Indian Movement (AIM), 418
- American Indian Self-Determination and Education Act, 418
- American Revolution, 97-98, **p**97, **p**98
- amusements, 305, 396
- Anadarko, 228, 289, 469, 476
- Anadarko Basin, 9, 421
- Anadarko Indians, 165
- annex, 173
- annuities, 158
- annuity goods, 226
- Antelope Hills, 10
- anthropologist, 43
- Anti-Saloon League, 313
- antislavery movement, 194
- Antlers, 21, 396, 472

Apache Indians, 55, 56, **p**56, 57, 59, 94, 289, 290  
appropriate, 102  
aquifers, 28, **m**28  
Arapaho Indian Boarding School, 227  
Arapaho Indians, 219, 220, 223, 227, 228, 259, 285  
Arbuckle, Colonel Matthew, 123, 124  
Arbuckle Mountains region, 18, **p**18  
archaeologists, 42, 43  
Archaic Indian culture, 48-49, **p**48  
Ardmore, 18, 361, 423  
Arkansas Cherokee Indians, 160  
Arkansas River, 19, 29, 31, 103, 105, 106, 110, 111, 424-425  
Arkansas Territory, 120  
Arkoma Basin, 9, 26  
armistice, 345  
Armstrong Academy, 154  
Arnett, 10  
artifacts, 42, 43  
Asah, Spencer, 369  
Asbury Manual Training School, 157  
Asian settlers, 486  
Asp, Henry, 311  
assessor, county, 507  
assimilation policy, 126  
Atkins, Hannah, 416  
Atlantic and Pacific Railway Company, 255  
atlatl, 49, **p**49  
Atoka, 17, 335, 339  
Atoka Agreement, 271  
attorney general, state, 494, 497  
Auchiah, James, 369  
auditor and inspector, state, 494, 497  
Audubon, John James, **p**84  
Augusta, Congress of, 96  
Autograph Rock, 109, 178  
automobile, 339, 360-361  
Autry, Gene, 459  
Avant, 339  
Avery, Cyrus, 340, 360  
aviation industry, 357-358, 359, 360, 452  
Axton, Mae Boren, 395  
Aydelotte, James Monroe, 342

## **B**

baby boomers, 393-394, 419  
Balliet's, 373

banks and banking, 325, 364, 365, 367, 438  
Barker family, 373  
Barnard, Kate, 329, **p**329  
Barnes, Cassius M., 288  
Barnitz, Albert, 223  
barnstormers, 357  
Barresi, Janet, **p**451  
Barrow, Clyde, 373, **p**373  
barter, 57, 82  
Bartlesville, 19, 26, 335, **p**336, 337, 339, 439  
Bartlett, Dewey, 410, 415  
basins, 9  
Bass, Wanda, 461  
Battle of Twin Villages, 59, 94  
Bayless, Rick, 460, **p**460  
Beal, Mattie, 291, **p**291  
Beaver, 10, 339  
Beaver City, 282, 283  
Beaver County, 52, 282, 284  
Beaver Dunes State Park, 10  
Beaver River, 30  
Beavers Bend State Park, 21, 368  
Beckham County, 11, 283  
Becknell, William, 109, 178  
Belle Isle Park and Lake, 305  
Bellmon, Henry Louis, 410, 440-441, 496  
Bemo, John Douglas, 164, **p**165  
Bench, Johnny, 429, **p**443, 457  
Benson Park, 305  
Beringia, 44  
Bering land bridge, 44  
Bernhardt, William, 460  
Berning, Susie Maxwell, 429  
Berry, Jennifer, 457, 459  
Bethany, 374  
bicameral (legislature), 312  
Bigfoot Festival, 474  
Big Pasture, 289, 290  
bill, 499-500  
bill of rights, 313  
biomass, 454  
birds, migratory, 12  
bison, 47, 48, 150-151  
Black Beaver, 183  
Black Kettle, 219, 222, 223, 224  
Black Kettle National Grasslands, 10  
Black Mesa, 9, 10, **p**10

blacks,  
 and civil rights movement, 393  
 in Civil War, 204, 205  
 discrimination against, 314, 326-327  
 and grandfather clause, 328  
 and land runs, 280  
 and segregation, 244-245, 314, 326-327, 398  
 and suffrage, 328, 332  
 and towns, 244-245  
 Tulsa race riot, 354-355.  
*See also* slavery, slaves.

Blackwell, **p**298

Blaine County, 27, 286, 306

Bloomfield Academy, 159

Blue Ribbon Downs, 438

Blue River, **p**30, 31

Blunt, James G., 203, 204, **p**204, 205, 206

boards, state, 312

Boggy Depot, 158, 179, 184, 250

Boggy River, 31

Bohanon, Luther, 412

Boiling Springs State Park, 11, 368, 472, **p**472

Boise City, 10, 387

boll weevil, 303

Bonaparte, Napoleon, 100

boomers, 273-281

Boone, Nathan, 148

Booneville, Benjamin, 174-175

Boren, David L., 419-420, **p**419, 437

Boudinot, Elias, 135, 136

Boudinot, Elias C., 216, 273, **p**273

Bougie, Charles, 107

Bowlegs, Billy, 164, 240

boycott, 411

Boyd Springs, 257

Bradford, Major William, 106-107

branches of state government, 312, 494-503

Braniff, Thomas and Paul, 358

Braum's Ice Cream and Dairy, **p**426, 427

Bricktown, 300, 442, **p**442

bridges, 184

Bristow, 361

British settlers, 484

Broken Arrow, 19, 326

Broken Bow, 21

Brooks, Garth, 457, 459, **p**459

Brooks & Dunn, 459

Brown, Elijah, 240

Brown, John F., 163, 216, 240, 309

*Brown v. Board of Education of Topeka*, 411, 412

Bryson Paddock site, 57

budget, 495

buffalo, 16, 17, 54, 150-151, 228, 254. *See also*  
 bison.

Buffalo Soldier Monument, 457

buffalo soldiers, 224, 484

buffalo wallows, 151

buffer zone, 173

Burbank field, 355

Bureau of Indian Affairs, 132, 458

Burke, Bob, 460

Burney Institute, 159, 241

Burnham site, 45

Burns, Greg, 460

Busey, Gary, 459

business, 314, 426-427. *See also* economy.

busing, 412

Butler, Elizar, 161

butte, 11

Butterfield Overland Mail, 183-185, **p**184, 254

Byington, Reverend Cyrus, 85, 154, **p**154

Byrd, Edward, 335

## C

Cabin Creek, Battle of, 204-205

Cabot, John, 71

Caddo County, 289, 371

Caddo Indians, 57, **p**57, 121, 122, 165, 198, 218-219, 289

Calf Creek culture, 49

California Road, 179-180

calumet, **p**80, 84

Cameron State, 326

Camp Doniphan, 342

Camp Gruber, 386

Camp Mason, 147

Camp Radzimirski, 148

Camp Supply, 222, 223. *See also* Fort Supply.

Canadian County, 273, 282, 285, 289

Canadian River, 31, 81, 106, 110

Cannon, Rufus, 261

Canton Lake, 11

capital, state,  
 Guthrie, 285, 310, 329-330



Oklahoma City, 329-330  
 Capitol, State, 14, 27, **p**27, **p**320-321, 330-331, 332, 356, 480, 504-505, **p**504, **p**505  
 caravan, 179  
 carbon dating, of artifacts, 43  
 Cardin, 422  
 Carnegie, 361  
 Carson, Christopher (Kit), 219, **p**219, 220  
 Carter, Charles D., 315  
 Carter County, 26  
 cartographer, 72  
 Catawba Indians, 96, 165  
 Catlin, George, **p**83, **p**131, **p**137, 147, **p**147  
 Catoosa, Port of, 19, 425  
 cattle,  
   drives, 246-247  
   grazing lands for, 247  
   longhorn, 246, **p**246  
   railheads for, 246  
   trails, 250-251, **m**250  
 caves, 11, 21  
 Cayuga Indians, 138  
 cede, 122  
*Celebrate Freedom Week*, 500  
 Centennial Celebration, 457, **p**457  
 Centennial Stories, 457  
 Chandler, 285  
 Chaney, Lon, 459  
 Chapman, Harry, 336  
 charter, 314  
 Checote, Samuel, 242, 243  
 Chelsea, 335  
 Chenoweth, Kristen, 459  
*Cherokee Advocate, The*, 162  
 Cherokee (Jerome) Commission, 285  
 Cherokee Indians, 96, 98, 104, 458  
   and allotments, 272  
   Capitol, **p**236-237  
   in Civil War, 198, 204  
   constitution of, 128, 136, 160  
   Eastern Band of, 135, 160, 161  
   and education, 161, 162, 244  
   and freedmen, 244  
   government of, 128, 135, 160, 272  
   in Indian Territory, 160-163, 243-244  
   and land leasing, 258  
   and law enforcement, 259

national seminaries, 244  
 newspaper, 128, 135  
 removal of, 135-136  
 in Southeast, 127, 128, 135  
 syllabary, 128, 129  
 Trail of Tears, 135-136  
 treaties with, 135, 216  
 Western, 123, 124, 125, 136, 160, 161.  
*See also* Indians.  
 Cherokee Outlet, 125, 216, 255, 258, 274, 276, 286  
*Cherokee Phoenix*, 128, **p**128, 135  
 Cherokee Strip, *see* Cherokee Outlet.  
 Cherokee Strip Live Stock Association, 258  
 Cherryh, C. J., 460  
 Chesapeake Energy, 454-455  
 Chesley, Frank, 336  
 Cheyenne-Arapaho Stock Growers Association, 258  
 Cheyenne Indians, 219, 220, 222-224, 227, 230, 259, 285, 458-459  
 Chickasaw Academy, 159  
*Chickasaw and Choctaw Herald*, 160  
 Chickasaw Indians, 22, 94, 96  
   and allotments, 271  
   in Civil War, 198, 218, 219  
   constitution of, 159, 160  
   and education, 159, 241  
   and freedmen, 244  
   government of, 128, 159-160, 241  
   in Indian Territory, 158-160, 184, 241  
   Light Horsemen, 159  
   and oil, 257  
   removal of, 134  
   in Southeast, 127, 134  
   treaties with, 134, 160, 216.  
*See also* Indians.  
 Chickasaw National Recreation Area, 18, 305  
 Chickasaw Oil Company, 257  
 chickens, *see* eggs, poultry.  
 Chickasha, 14, 326, 361  
 Chilocco Indian Schools, 245  
 Chisholm, Jesse, 183, 251, **p**251  
 Chisholm Trail, 197, 250, **m**250, 251, 256  
 Choctaw, 14  
 Choctaw Indians, 22, 93, 94, 96, 104, 124, 134, 283  
   and allotments, 271  
   in Civil War, 198  
   Code Talkers, in World War I, 342, 343

- constitution of, 128, 153
- and education, 153-154, 242
- and freedmen, 244
- government of, 153
- in Indian Territory, 153-155, 184, 242
- Light Horsemen, 155
- mineral resources of, 256
- removal of, 130, 132
- and slaves, 155
- in Southeast, 127, 130
- treaties with, 126, 130, 134, 216.
- See also* Indians.
- Choctaw Intelligencer*, 155
- Choctaw Railroad, 300
- Choctaw Telegraph*, 155
- Chouteau, Auguste, 96-97, 107
- Chouteau, Auguste Pierre, Jr. (Colonel A. P.), 108, **p**108, 122, 139, 183
- Chouteau, Pierre, 107, 122
- Chouteau, Yvonne, 375
- Christian, Charlie, 373-374
- chunkey, **p**53
- chuck wagons, 247-250
- Chupco, John, 216, 240
- Chustenahlah, 202
- Chusto Talasah, Battle of, 200
- Cimarron County, 10, 109, 178, 284
- Cimarron Cutoff (Route), 109, 178, 219
- Cimarron River, 31, **p**31, 105
- Cimarron Territory, 283
- Citizen Band of Potawatomi Indians, 231
- Citizens League, 314
- civil appeals, court of, 500, 502
- Civilian Conservation Corps, 367
- civil law, 501
- Civil Rights Act of 1964, 410, 416
- civil rights movement, 393, 410-412, 416
- Civil War,
  - battles in Indian Territory, 202, **m**202, 203, 204-206
  - beginning of, 195
  - black troops in, 204
  - causes of, 192, 194, 195
  - effects of, 214, 240
  - end of, 207
  - guerrilla warfare, 206
  - historic sites, 470, 478
  - and Plains tribes, 218-219
  - refugees, 207
- Claremore, 122, 180, 326, 427
- Clark, John G., 284
- Clark, Roy, 459
- Clark, William, 102
- Clayton Lake State Park, 21
- clerk, county, 507
- clerk, court, 507
- Cleveland County, 35, 273, 282, 285
- climate, 32-35
- Clinton, 11
- Clovis people, 45, 46-47
- Clovis spear point, 46, **p**46
- coal, 26, 256-257, 306, 357
- Coalgate, 17, 256
- Cobb, Geraldyn M., 403, **p**403
- Code Talkers, 342, 343, **p**378-379, 388
- Cody, "Buffalo Bill," 252
- Colbert, Dougherty, 241
- Colbert, George, 158
- Colbert, Winchester, 216, **p**217
- Colbert's Ferry, 184, 185, 255
- Cold Springs, 27, 178
- Cold War, 399-400, 410, 436
- collective bargaining, 368
- colleges and universities, 450, 522-523. *See also* specific schools.
- Collins, Reba, 460
- Collins Institute, 159
- colony, 77
- Colored Agricultural and Normal School, 288
- Columbian mammoth, 47, **p**47
- Columbus, Christopher, 56, **p**64-65, 70-71, **p**70
- Comanche County, 49, 289
- Comanche Indians, 59, 94, 96, 121, 146, 165, 218, 219, 220, 224, 228, 229, 259, 289, 290, 388
- Comaneci, Nadia, 457
- Commerce, 306
- commerce, secretary of, 495
- commissioner, county, 507
- commissioner of insurance, 494, 497
- commissioner of labor, 494, 497
- committees, legislative, 500
- Common Core State Standards, 451
- communism, 353, 382, 436
- compressed natural gas (CNG), 454

compromise,  
     of 1850, 192, **m**193, 194  
     Missouri, 6, 120, **m**120, 193  
 Computational Geosciences, 447  
 Conestoga Indians, 139  
 confederacy, 94  
 Confederate States of America, 195. *See also* Civil War.  
 Connell State, 326  
 Conner, Bart, 457  
 Connors State College, 326  
 conquistadors, 73  
 conservation, 338, 367, 372-373. *See also* environment.  
 consolidated schools, 394  
 constitution, 98  
     amendments to, 313  
     Indian, 128, 136, 153, 159, 160  
     state, 310, 311-315, 494  
 constitutional convention, state, 310-311  
 contract, 183  
 Conway, Mary, 180  
 Cooley, D. N., 215  
 Cooper, Douglas, 198, 200, 203-204, 205  
 Cooper, L. Gordon, 403  
 cooperatives, 328, 368  
 Cooper Bonebed, 47  
 Cooperton site, 44  
 Cordell, 11  
 Corn (formerly Korn), 343  
 Coronado, Francisco Vasquez de, 56-57, 73-75, **p**74, **m**75, 83  
 Corporation Commission, 330, 338, 497  
 corporations, 314  
 Corps of Discovery, 102  
 Cortés, Hernando, 73, **p**73  
 Cosden, Joshua S., 336, 355  
 Cotchoche, 216  
 cotton, 293, 300, 302-303, 357, 422  
 Couch, William L., 274, **p**275  
 council of defense, 342-343  
 Count Basie, 373  
 counties, 311, 506, **m**507  
 county excise board, 508  
 county government, 506-508  
 county seat, 506  
 courts, state,  
     of civil appeals, 500, 502  
     of criminal appeals, 500, 501, 503, **p**503  
     district, 312, 500, 503  
     municipal, 312  
     supreme, 312, 500, 501-502, **p**502, 503  
 Cowboy Hall of Fame, 395  
 cowboys, 247  
 Cowskin Prairie, 204  
 Craig County, 256  
 Craterville, 307  
 Crazy Snake Rebellion, 272  
 credit, 364  
 Creek Indians, 96, 98, 104, 126, 153  
     and allotments, 271  
     in Civil War, 198  
     constitution, 158, 242  
     and education, 157, 243  
     and freedmen, 244  
     government of, 128, 156, 157, 272  
     in Indian Territory, 156-158, 242-243  
     Light Horse, 157, 242  
     Lower, 133, 156, 199, 242  
     Loyal, 200, 202, 207  
     and oil industry, 336  
     removal of, 133  
     and slaves, 157  
     in Southeast, 127, 133  
     treaties with, 216  
     Upper, 133, 156, 199, 201, 242.  
     *See also* Indians.  
 crime, 373-374  
 criminal law, 501  
 criminal appeals, court of, 500, 501, 503, **p**503  
 Cross, 299  
 Cross Timbers, 12, 17, 24, **m**25  
 Crosstown Expressway, 455  
 Crowe, William J., 436, **p**437  
 Cruce, Lee, 330-331, **p**331  
 culture, 43, 467  
     Indian, 58, 60-61, 459, 469-470  
     popular, 361  
     prehistoric, 44-54  
 Cunningham, Joan, 369  
 Curtis Act, 271-272  
 Curtiss-Southwest Airplane Company, 357  
 Cusak Meats, 373  
 Cushing, 336, 338, 453-454

Cushing-Drumright field, 336, 338  
Custer, George Armstrong, 223-224, **p**224  
Custer County, 286  
Cutthroat Gap Massacre, 121, 146  
Czechoslovakian settlers, 300, 485

## D

Dalton people, 47  
dams, 396  
Dancing Rabbit Creek, Treaty of, 132, 153  
Darlington, Brinton, 227  
Davenport, James, 315  
Davis, Alice Brown, 163  
Davis, Jefferson, 147, 182, **p**196, 198, 199  
Davis, Nancy Randolph, 398  
Dawes, Anna, 263  
Dawes, Henry, 270, **p**270  
Dawes Commission, 271  
Dawes Severalty Act, 270-271  
Day County, 286  
Debo, Angie, 460  
Deep Deuce, 374  
Deer Creek, 57  
Delaware County  
Delaware Indians, 121, 149, 183  
Del City, 14  
Delmar Gardens, 305  
Democratic party, 284, 310  
Department of Highways, 332  
depression, *see* Great Depression.  
deregulation, 421  
de Soto, Hernando, 57-58, 76, **p**76, **m**76  
desperados, 159  
destitute, 153  
Devon Energy Tower, 454, **p**455  
Dewey County, 286  
dictator, 382  
discrimination, 314, 326-327  
disease, and Indians, 84-85  
disfranchisement, 328, 332  
dissenters, 343  
district attorney, 507  
district courts, 500, 503  
District of Louisiana, 101  
diversity, 256, 467  
Doak's Stand, Treaty of, 126, 130  
Doaksville, 153

Dodge, Colonel Henry, 146-147  
Domebo Canyon site, 47  
Doris, 307  
Downing, Lewis, 243  
draft, 342, 384  
Drew, John, 198, 202  
drought, 24, 49, 370, 396, 446, 456  
drovers, 247  
Drumright, 336  
dugout (canoe), 219  
dugout (house), 280, 281  
Dull Knife, 230  
Duncan, 14, 256, 423, 439  
Dunjee, Roscoe, **p**326, 327  
Dunn, Bob, 373  
Durant, 22, 326, 339, 386, 439, **p**439  
Dust Bowl, 24, 370-371, **m**370  
Du Tisne, Claude-Charles, 80-81  
Dwight Mission, 161

## E

Eagletown, 132, 154  
Early Plains Indians, 54-55  
earthquakes, 14, 16, 396, 457  
East Central Normal School, 326  
Eastern Cherokee, 160, 161  
Eastern State College, 426  
East Shawnee Trail, 250, **m**250  
economy, 34, 82, 85, 353, 364, 365-366, 437-438, 450-456, **f**450  
ecosystem, 17  
Edmond, 14, 279, 285, 325  
Edmondson, J. Howard, 402, 410, 437  
education,  
    academies, Indian, 148  
    for blacks, 306  
    Common Core State Standards, 451  
    consolidated schools, 394  
    higher, 325-326  
    and integration, 412  
    junior colleges, 423, 426  
    Lottery Trust Fund, 441  
    mission schools, 241  
    Oklahoma C3 Standards, 451  
    public, 313  
    reforms, 419, 423, 426, 440-441  
    state superintendent of, 441, 451, 497

subscription schools, 304  
 territorial, 325  
 vocational-technical, 423.  
*See also* schools.  
 education, secretary of, 495  
 eggs, 17  
 El Camino Real, 76, 77  
 election of 1860, **m**194, **f**194, 195  
 Electric Park, 305  
 electric power, 34, 368  
 elevation, 33  
 Elk City, 11  
 Ellis County, 397  
 Ellis Island, 487, **p**487  
 Ellison, Ralph, 374, **p**374  
 Ellsworth, Henry, 139  
 El Reno, 14, 256, 282, 289, 291, 300, 301, **p**301, **p**343, 456  
 El Turco, 74, **p**74  
 Emancipation Proclamation, 204  
 embargo, 421  
 emigrants, 158  
 Enabling Act, 309-311, 329, 508  
 encroachment, 96  
 energy, 34, 453-455. *See also* oil industry.  
 energy, secretary of, 495  
 Enhanced Fujita Scale for Tornadoes, **f**34  
 Enid, 14, 256, **p**287, 300, 305, 326, 386, 423  
 England, 81, 92, 93, 94, 96, 97-98. *See also* Great Britain.  
 entertainment, popular, 394-395, 396  
 environment, 3, 7. *See also* conservation.  
 epidemic, 101  
 Epworth University, 326  
 equal protection clause of Fourteenth Amendment, 412  
 Equal Rights Amendment, 417  
 Ericcson, Leif, 68, **p**68  
 erosion, 9  
 ethnic group, 483-486  
 Euchee Indians, 138  
 Eufaula, **p**302  
 Eufaula Lake, 19, 29, 175, 396, 425  
 evolution, teaching of, 363  
 executive branch of government, 312, 494-497  
 expedition, 70  
 exploration and settlement, **m**72  
     of New World, 70-81  
     of Oklahoma, 74-77, 79-81, 102-106

**F**  
 45th Division, 387, 400  
 Failing, George, 373  
 Fairfield Mission, 161  
 Fair Meadows, 438  
 fairs, 439. *See also* festivals and fairs.  
 Fallin, Mary, **p**494, 496  
 Farm Credit Administration, 368  
 farmers, 328  
     cooperatives, 328  
     during Great Depression, 368  
     Indian, 50  
     organizations for, 357  
     in postwar period, 353  
     price supports for, 422-423  
     tenant, 242, 368, 371  
     during wartime, 344, 389  
 Farmers Alliance Party, 284  
 farming, 357, 370. *See also* agriculture.  
 Farm Security Administration, 368  
 Federal Deposit Insurance Corporation, 367-368  
 Federal Emergency Relief Administration, 367  
 Federal Housing Administration, 368  
 Ferguson, Elva Shartel, 288  
 Ferguson, Thompson B., 288, **p**288, 289  
 Ferris, Scott, 315  
 festivals and fairs,  
     aviation, 472  
     Civil War reenactments, 470  
     cultural heritage, 473  
     film, 473  
     flora and fauna, 470  
     frontier, 470  
     harvest, 471  
     music, 468  
     Native American, 468  
     state fairs, 471  
     trails and rails, 472  
 Fisher, Ada Lois Sipuel, 398, **p**398  
 Five Tribes (Nations), 127, 153, 182, 271-272.  
     *See also* Indians, specific tribes.  
 Flaming Lips, 457, 459  
 Fletcher, Alice, 270, 271  
 flint knapping, 46  
 Floyd, Charles "Pretty Boy," 373  
 Floyd, William, 327  
 Foley-Davis, Lelia, 416

Folsom people, 47-48  
 Foreman, Grant and Carolyn, 460  
 forests, 24, 25  
 Fort Arbuckle, 22, 138, 148, 181, **p**196, 197  
 Fort Blunt, 204  
 Fort Cobb, 148, 165, 197, 222, 224  
 Fort Coffee, 134, 148  
 Fort Coffee Academy, 148, 154  
 Fort Davis, 199, **p**199, 203  
 Fort Gibson, 110, **p**122, 123, **p**123, 133, 179, 203, 204, 205  
 Fort Holmes, 147, 175  
 Fortier, Michael, 444  
 Fort McCulloch, 199, 203  
 Fort Nichols, 219-220  
 Fort Reno, 231, 388, 470  
 forts, 146  
 Fort Sill, 16, 224-225, 289, 342, 357, 361, 388, 451, **p**451, 478  
 Fort Smith (Arkansas), 105, 106, 110, 123, **p**125, 181, 204, 215, 260  
 Fort Supply, 223  
 Fort Towson, 22, 111, 124, 134, 155  
 Fort Washita, 22, 148, **p**148, 197, **p**197  
 Fort Wayne, 148, 204  
 fossil, 43  
 fossil fuels, 26  
 Foss Lake, 11  
 Fourteenth Amendment, 412  
 France, 77-80, 92, 93, 94, 95, 96, 98  
 Franklin, John Hope, 460  
 Franklin, Wirt, 338  
 Franks, Tommy R., 449, **p**449  
 Frantz, Frank, 289, 314, **p**314  
 Frederick, 12  
 freedmen, 215, 244-245  
 Freedmen's Bureau, 211, 244  
 free state, 193  
 French and Indian War, 94-96  
 Frisco, 282  
 Frisco Railroad, 255, 299, 301  
 frontier, 93  
     official closing of in 1890, 285  
 fuel cells, 454  
 Fujita tornado scale, **f**34  
 Fulton, Elmer, 315  
 fur trade, 79, 85, 92, 107, 108

**G**  
 Galbreath, Robert F., 336  
 Garber, 26  
 Garfield County, 288  
 Garner, James, 429, **p**429  
 Garrett, John, 261  
 Garrett, Sandy, 441  
 Garriott, Owen, 427, **p**428  
 garrison, 224  
 Garvin County, 138  
 Gary, Raymond, 400, **p**400, 402, 496  
 gas, natural, 26, 324, 338, 421  
 Gatty, Harold, 358  
 Gautt, Prentice, 412  
 geography, of state, 2-35  
     geographic regions, 8-22, **m**9  
     vital statistics, 4, 6-7, 512  
 German settlers, 485  
 Germany, and World War II, 382, 383-384  
 Geronimo, 252, 289  
 gerrymandering, 331  
 GI Bill, 393  
 Gibson, Arrell Morgan, 460  
 Gibson Station, 255  
 Gilcrease, Thomas, 336, 395  
 Gilcrease Museum, 395, 480, **p**480  
 Gill, Vince, 457, 459  
 Glass, Anthony, 103  
 Glass Mountains, 11, **p**11  
 Glenn Pool, 336  
 Golden Pass, 307  
 Goldman, Sylvan, 373  
 Good Roads Association, 339  
 Goodwell, 10, 326  
 Gopher John, 164  
 Gore, Thomas P., 324, **p**324  
 government, county, 324, 437, 506-508  
 government, municipal, 279, 324, 508-509  
 government, state,  
     branches of, 312, 494-503  
     cabinet, 495  
     constitution, 311-315, 494  
     executive branch of, 312, 494-497  
     judicial branch of, 312, 500-503  
     legislative branch of, 312, 498-500  
 governor,  
     list of, 518-519

powers of, 495-496  
 state, 312, 314, 494  
 Governor's Mansion, **p**495  
 Grady County, 35  
 grandfather clause, 328, 332  
 Grandfield, 339, 456  
 Grand Lake O' the Cherokees, 20, 396  
 Grand River, 20, 31, 110  
 Grand Saline, 105  
 Granite, 329  
 granite, 27  
 Grant, 112  
 Grant, Amy, 457  
 Grant County, 288  
*Grapes of Wrath, The*, 371  
 grasslands, 10, 14, 17, 24, 25, 247, 258  
 Grazinglands Research Laboratory, 450  
 Great Britain, 94, 95, 96, 383  
 Great Depression, 364-374  
     bank failures, 364, 365  
     factors contributing to, 364-365  
     and New Deal measures, 367-369  
     Oklahoma in the, 365-366  
 Greater Seminole field, 355-356  
 Great Plains, 7, 370-371  
 Great Raft, 22  
 Great Salt Plains, 12, 15, **p**15, 105  
 Great Salt Plains Lake, **p**14  
 Great Salt Plains National Wildlife Refuge, 12  
 Great Spanish Road, 99  
 Great Western Cattle Trail, 251  
 Green, David, 427  
 Green, F. B., 284  
 Green Corn Rebellion, 343  
 greenhouse and plant industry, 455  
 Greenwood, 327, 354-355  
 Greer, Frank, **p**277, 279  
 Greer County, 11, 283  
 Gregg, Dr. Josiah, 175  
 Grimes, William C., 289  
 groundwater, 28  
 Grove, 20  
 guardianship, 198  
 guerrillas, 206  
 Guess, George, 125, 308. *See also* Sequoyah.  
 Guthrie, 14, 255, 279, 282, 285, 301, 310, 311, 315, 361, 439, 456

Guthrie, Woody, 371, **p**371  
 Guymon, 10, 427  
 gypsum, 11, 27, 306-307  
 Gypsum Hills region, 11  
  
**H**  
 Hackberry Flat Wildlife Management Area, 12  
 Hainai Indians, 165  
 Hall, David, 419  
 Halliburton, Erle, 338  
 Hamilton, Argus, 457  
 Hamilton Statehood Bill, 309-311  
 Hamlin, A. C., 328  
 Haney, Enoch Kelly, 460  
 Hannaford, J. T., 256  
 Hanraty, Pete, 256, 311, **p**312, 313  
 Hanson, 459  
 Harjo, Chitto (Crazy Snake), 272, **p**272  
 Harjo, Chocote, 216  
 Harjo, Echo, 158  
 Harjo, Fos, 216  
 Harjo, Oktarharsars, 216, 242  
 Harmon County, 11, 283  
 Harper County, 47  
 Harrah, 14  
 Harris, Cyrus, 158, 241  
 Harris, LaDonna, 418, **p**418  
 Harrison, Benjamin, 275, 276, **p**276, 282, 284, 285, 286  
 Hart, Carolyn, 460  
 Hartshorne, 26  
 harvest festivals, 471  
 Harvey Houses, 359  
 Haskell, 58  
 Haskell, Charles N., 309, 310, 311, 314, 315, 317, 324, 329, 330, 338  
 Haskell State, 326  
 Haskins, Don, 412  
 Hastings, William Wirt, 309  
 Hazen, William, 222  
 headright, 339  
 Healdton field, 26, 334-335, 338, 344  
 health and human services, secretary of, 495  
 Heavener, 68  
 Heavener Runestone, 69  
 Heavener Runestone Park, **p**21, 69  
 Heflin, Van, 459

Hefner, Robert, 338  
 Helena, 326  
 Henry Kendall College, 326  
 Herrington, John, 428  
 Hewitt, 26  
 higher education, 325-326  
 High Plains region, 10  
 Hightower, Rosella, 375  
 highways, 332, 339, 340, 395, 400, 402  
 Hillerman, Tony, 460  
 Hinder, 459  
 Hinton, S. E., 428  
 Hispanic Americans, 485-486  
 Hitler, Adolf, 382, 383, **p**383, 384, 388, 389  
 Hobart, 289  
 Hobby Lobby, 427  
 Hokeah, Jack, 369  
 Holahiti Emathla, 163  
 Holland, Fern, 461  
 Hollis, 11, 307  
 Homestead Act, 214, 215, 275  
 homesteaders, 214, 274, 275, 278, 280-281, 285-288  
 Honey Springs, Battle of, 205, **p**205, 207, 470  
 Hooker, 456  
 Hopewell, Treaty of, 98  
 Hornday, William Temple, 150  
 horses, 57, 79, 82-83, 438, 456  
 hourglass selenite crystals, 12  
 Houser, Allan, 459, **p**464  
 house of representatives, state, 312, 498, **p**498, 499, 500  
 Howard, Ron and Clint, 429  
 Hugo, 22  
 human resources and administration, secretary of, 495  
 human rights, 153  
 human services, secretary of, 495  
 hydraulic fracturing (fracking), 454  
 Hydro, 180  
 hydroelectric power, 396

**I**

Iba, Henry, 395, 412  
 Idabel, 22  
 Illinois River, 20, 31  
 immigrants, 172, 173

immunity, 84, 85  
 impeachment, 332, 363  
 impressment, 120  
 Indianahoma, 219  
 Indian Citizenship Act of 1924, 345, 351  
 Indian Civil Rights Act, 418  
 Indian Expedition, 203-204  
 Indian Removal Act, 130  
 Indians,  
   academies, 148  
   agents, 132, 226, 227, 228  
   and agriculture, 50  
   and American Indian Movement (AIM), 418  
   Archaic culture, 48-49  
   artists, 369  
   belief systems, 58  
   citizenship for, 345, 351  
   and civil rights, 418  
   contact with Europeans, 56-58  
   contemporary, 458-459  
   cultures, 58, 60-61, 459  
   and Curtis Act, 271-272  
   and Dawes Act, 270-271  
   and disease, 84-85  
   Early Plains, 54-55  
   and education, 148  
   ethnic groups, 483  
   and family, 60  
   federal policy toward, 225-228, 270-271  
   festivals, 468  
   and food, 61  
   and gaming, 459  
   government systems of, 368  
   in Great Depression, 368  
   and the horse, 82-83  
   hunting, 47-48  
   and land, 118-119, 270-272, 275  
   languages, 61  
   lifestyle, 127  
   migrations, 45, 120-123  
   and missionaries, 127  
   mound builders, 52-54  
   peace policy, 225-228  
   Paleo, 44-48  
   Plains, 120  
   Plains Village, 52  
   plants used by, 61, 84



police, 242, 259  
population, 40, 56, 233  
prehistoric, 44-54  
relations with Europeans, 93-94, 96-97  
removal of, 126-128, 130, 132-139  
and slaves, 127, 216  
and tobacco, 84  
and trade, 82  
treaties with, 118-119, 126, 215-217, 232-233, 270  
wars involving, 222-224  
Woodland, 50-51, 131  
*See also* Five Tribes, specific tribes.

Indian Territory, 174-175, 232-233  
court in, 260-263  
during Civil War, 196-197, 218-219  
early boundaries, 125, 127  
governors, 288, 289  
land openings, 276-281, 285-288  
and Oklahoma Territory, 308  
settling tribes in, 127-139, 152-165, 215, 231-233  
and statehood proposals, 308, 309  
surveying, 148, 271  
trails across, 177-181

indict, 363  
Industrial Institute and College for Girls, 326  
inflation, 353  
influenza, 345  
Initial Point, 18, 217  
initiative, popular, 313  
insurance, commissioner of, state, 494, 497  
integration, 411-412  
interstate highways, 395, 400, 402  
interurbans, 301  
iodine, 27  
Iowa Indians, 149, 285  
Iraq, 440, 449, 461  
Irish settlers, 484  
irrigation, 23, 28  
Irving, Washington, 24, 139, **p**139  
Isa-tai, 228  
Isparhecher, 242-243  
isthmus, 73  
Italian settlers, 484-485  
Italy, and World War II, 382, 383, 384, 385

## **J**

Jackson, Andrew, **p**119, 120, 126, **p**126, 128, 130,

135, 136, 139  
Jackson, Wanda, 459  
Jackson County, 47, 283  
Jacobson, Oscar, 369  
Jake Bluff, 47  
James, Thomas, 109, 121  
Japan, and World War II, 382, 384-385  
Jayroe, Jayne, 413, 429, 457, 459  
jazz, 361, 374  
Jazz Hall of Fame, 457, 480  
Jefferson, 300  
Jefferson, Thomas, 100, 101, 102, **p**102, 104, 118, 119, 126  
Jenkins, William M., 289  
Jenks, 19  
Jerome (Cherokee) Commission, 285  
Jim Crow laws, 314, 328  
John A. Brown Stores, 373  
Johnson, Andrew, 211  
Johnson, Ben, 459  
Johnson, Grant, 261  
Johnson, Jimmy, 429  
Johnston, Henry S., 311, 324  
Jolliet, Louis, 58, 77  
Jolly, John, 160  
Jones, Robert, 155, **p**155  
Jones, Shirley, 457  
Joplin Region, 306  
Joseph (Chief), 233, **p**233  
judicial branch of government, 312, 500-503  
Jumper, John, 163, 164, **p**164, 198, 240  
junior colleges, 423, 426,  
jurisdiction, 260  
justice of the peace, 312

## **K**

Kansas, 149, 182, 194  
Kansas-Nebraska Act, 182, 194  
Karlsel'ni, Thorfinn, 69  
Kataka Indians, 147  
Katy Railroad, 255, 257, 299, 301  
Kaw Indians, 58, 75, 232, 289  
Kay County, 288, 299  
Keating, Frank, 504  
keelboat, 110-111, 177  
Keetoowah, 272  
Keith, Harold, 460

Keith, Toby, 457, 459  
 Kelly, George "Machine Gun," 373  
 Kemp, Jackson, 241  
 Kennard, Motey, 158  
 Kenton, 10, 49  
 Kerr, Robert S., 399, **p**399, 425, 496  
 Kerr Center, 450  
 Keystone Lake, 17, 425  
 Kiamichi River, 31  
 Kichai Indians, 121, 165  
 Kickapoo Indians, 138, 149, 288  
 kickback, 437  
 Kicking Bird, 226, 227, 230, **p**230  
 Kildare, 300  
 King, Martin Luther, Jr., 411  
 Kingfisher (Lisbon), 276, 279, 282, 285, 325  
 Kingfisher County, 273, 282, 285  
 Kiowa-Apache Indians, 121, 220  
 Kiowa County, 44, 289  
 Kiowa Five, 369  
 Kiowa Indians, 55, 121, 146, 147, 220, 223, 228, 229, 259, 289, 290  
 Kirkpatrick, Jeane, 436, **p**436  
 Korean conflict, 399-400  
 Krebs, 256  
 Ku Klux Klan, 353

## L

labor, 313, 324, 329, 353, 368  
 labor, commissioner of, state, 494, 497  
 La Bruyere, Andre Fabre de, 81  
 Laclede, Pierre, 96-97  
 La Harpe, Bernard de, 58, 79-80  
 Lake Altus-Lugert, 16  
 Lake Hudson, 47  
 Lake Hugo, 22  
 Lake Lugert, 396  
 Lake Murray, 22  
 Lake Murray State Park, 368  
 Lake Oologah, 19, 425  
 Lake Optima, 10  
 lakes, 28, 29, **m**29. *See also* specific lakes.  
 Lake Tenkiller, **p**32  
 Lake Texoma, 22, 29, 373  
 Lake Wister State Park, 21  
 Lakewood Electric Park, 305  
 land,

claiming, 278, 280-281  
 openings, 276-281, 285-288, 289-290  
 tribal ownership of, 270  
 land bridge, Bering, 44  
 Langston, 280, 288, 325  
 Langston University, 398  
 Larkin, Moscelyne, 375  
 La Salle, René Robert Cavelier, Sieur de, 77-79, **p**78  
 Latimer County, 51  
 latitude, 4, 5, 6, 33  
 Latting, Patience, 416  
 Lawhead, J. H., 306  
 lawmen, 260, 261  
 laws, making of, 499-500  
 Lawson, Roberta Campbell, 342  
 Lawton, 16, 289, 291, 326, **p**340  
 lead, 306, 357  
 Leased Lands, 216  
 Leavenworth, General Henry, 146-147  
 Lee Way Motor Freight, 373  
 Leflore, Campbell, **p**344  
 Leflore, Greenwood, 130, 153  
 Leflore, Thomas, 153  
 legislative branch of government, 312, 324-325, 498-500  
 Legislature, state, 312, 324-325, 498-500  
     committees, 500  
     how a bill becomes law, 499-500  
 Lehigh, 256  
 Lenna, 396  
 Letts, Billie, 460  
 Lewis, Meriwether, 102  
 Lewis and Clark expedition, 101-102  
 lieutenant governor, 494, 496-497  
 lighthorsemen, 242, 243, **p**243, 259  
 limestone, 27  
 Lincoln, Abraham, 194, **m**194, **f**194, 195, **p**195, 204, 211  
 Lincoln County, 285, 288  
 Lindbergh, Charles, 359  
 Little Sahara State Park, 12, **p**14, 473, **p**473  
 Little Wolf, 230  
 location, Oklahoma, 5-6, 24  
 Locust Grove, 203  
 Logan County, 273, 282, 285  
 Long, Frank, 369  
 Long, Major Stephen H., 105, 173

Longest site, 59  
 Long expedition, 105-106  
 long hunters, 97  
 longitude, 6  
 Lookeba, 456  
 Looney, John, 160  
 lottery, 135, 289  
 Louisiana Purchase, 100-109, **m**101  
 Love, Robert, 216  
 Love, Tom, 427  
 Love County, 49  
 Lovely's Purchase Treaty, 123  
 Love's Country Stores, 427  
 Loyal (formerly Kiel), 343  
 Loyal Creek, 200, 201 202, 207  
 Lucid, Shannon, 428, **p**428  
 Luper, Clara, 402, 411-412, **p**411  
 Lurty, Warren, 284, **p**284

## **M**

Mabee-Gerrer Museum of Art (Shawnee), 476  
 Made in Oklahoma Coalition, 455-456  
 Madill, 22  
 Magee, Carl, 373  
 Main Street Program, 438-439  
 Major County, 11  
 Mallet, Pierre-Antoine and Paul, 81  
 mammoth, 46, 47. *See also* Columbian mammoth,  
     woolly mammoth.  
 Mangum, 372  
 manifest destiny, 99, 172, 173-174  
 Mankiller, Wilma, 458, **p**458  
 Mantle, Mickey, **p**394, 395  
 MAPS, 441-443  
 Marcy, Randolph B., 179-180, **p**180, 181  
 Marietta, 339  
 Marland, E. W., 355, 372, **p**372  
 Marquette, Father Jacques, 58, 77  
 marshals, deputy, 260, 261  
 martial law, 353, 355  
 Martin, Robert, 284, 288  
 matrilineal society, 135, 161  
 Mauldin, Bill, 387  
 Mayes, Joel Bryan, 162  
 Mayes County, 47  
 McAlester, 17, 26, 256, 300, 301, 329, 386, 388  
 McAlester, James J., 256

McAlester Army Ammunition Plant, 451  
 McCabe, Edward, 280, **p**280  
 McClanahan, Rue, 459  
 McClellan-Kerr Arkansas River Navigation System,  
     19, 399, 424-425  
 McCombs, Solomon, 369  
 McCoy, Isaac, 148  
 McCoy, Joseph, 250-251  
 McCulloch, Ben, 198, 202, **p**203  
 McCurtain, Green, 309  
 McCutchan-McLaughlin site, 51  
 McEntire, Reba, 457, 459  
 McGuire, Bird S., 314  
 McIntosh, Chilly, 133, 198  
 McIntosh, D. N., 198, 205, **p**205, 216  
 McIntosh, Roley, 156, 157  
 McIntosh, William, 133  
 McIntosh County, 24, 256  
 McIntyre, Duncan A., 357  
 McLaurin, George, 398  
*McLaurin v. Oklahoma Board of Regents for Higher  
     Education*, 398  
 McShann, Jay, 373  
 McVeigh, Timothy, 443  
 Medford, 256, 339  
 medical research, 394  
 Medicine Lodge Treaty, 220, **p**221, 222  
 Medicine Park, 16  
 Meers, 16, 307  
 Memorial of Reconciliation, 457  
 Menawa (Creek Chief), **p**133  
 Merriman, Ryan, 459  
 mesa, 10  
 Mexican-American War, 173-174, **p**174  
 Mexico, 173, 174  
 MG Novelty, 373  
 Miami, 20, 306, 339, 361, 387  
 Miami Indians, 149, 271  
 Miami School of Mines, 326  
 Micco, Coweta, 216  
 middens, 43  
 middlemen, 68, 70  
 Midwest City, 14, 386  
 migrate, 121  
 migrations, prehistoric, 45  
 Mikanopy, 163  
 Mike Monroney Aeronautical Center, 452

Miles, John, 227  
 military, secretary of the, 495  
 Miller, George Washington, 252  
 Miller, Joe, 252, **p**252  
 Miller, Roger, 459  
 Miller, Zeke, 261  
 mineral resources, 9, 16, 18, 20, 26-27, 334,  
   coal, 19, 26, 256-257, 306, 357, 453  
   copper, 422  
   gypsum, 306-307  
   lead, 27, 306, 344, 357  
   oil and natural gas, 26, 324, 335-340, 344, 453-  
     454  
   zinc, 27, 306, 344, 357, 422.  
   *See also* mining, oil industry.  
 mining, 256-257, 306-307, 313, 353, 357, 422  
 minority, 159  
 mission, 154  
 missionaries, 75, 93, 127, 153, 157, 159, 161  
 mission schools, 241  
 Mississippi River, 99  
 Missouri Indians, 289  
 Missouri Compromise, 6, 120, **m**120, 193  
 Missouri-Kansas-Texas Railroad, 255, **m**255  
 Mitchell, Leona, 457, 459  
 Mohawk Indians, 139  
 Momaday, N. Scott, 428  
 Moore (Verbeck), 14, 279  
 Moore, Paul, 460  
 Mopope, Stephen, 369  
 mound builders, 52-54  
 mountains, 9  
 Mount Scott, 16, **p**16  
 Mullally, Megan, 459  
 Munford, Morrison, 273  
 municipal government, 508-509  
 Murcer, Bobby, 429  
 Murrah, Alfred P., 444  
 Murray, Johnston, 400  
 Murray, William H. "Alfalfa Bill," 309, 310, 324, 366,  
   **p**366  
 Murray County, 18, 49,  
 Murray State College, 326  
 Murrell, George, 163, 481  
 Murrell Mansion, 481  
 Muscogee Creek Nation, 133.  
   *See also* Creek Indians.

Museum of the Great Plains, **p**88-89  
 museums, 475-482.  
   African American, 479  
   art and artifacts, 480  
   automobiles, 482  
   aviation and space, 482  
   Civil War sites, 478  
   famous Oklahomans, 479-480  
   frontier era, 477-478  
   Native American, 476-477  
   prehistory, 476  
   railroads, 478-479  
   Route 66, 479  
   sports, 482  
   trails, 478  
   *See also* specific museums.  
 Mushulatubbe, 153  
 music, 373-374, 395  
 musicians, Oklahoman, 459  
 Muskogee, 19, 301, 305, 339, 361, 386, 396  
 Mustang, 14  
 Myriad Botanical Gardens, **p**441, 442

## **N**

90th Infantry Division, 388  
 99s Museum of Women Pilots, 452  
 Nacodoches Indians, 58  
 Nanih Waiya, 153  
 nanotechnology, 450  
 Nárvaez, Pánfilo de, 73  
 NASA, 402, 427-428  
 Nation, Carrie, 313-314, **p**313  
 National Association for the Advancement of Col-  
   ored People (NAACP), 402  
 National Cowboy and Western Heritage Museum,  
   395, 480  
 National Guard, Oklahoma, 342, 354, 355, 366,  
   387, 449, 452  
 National Labor Relations Act, 368  
 National Memorial Institute for the Prevention of  
   Terrorism, 445  
 National Memorial Museum, 445  
 National Organization of Women (NOW), 417  
 National Severe Storms Laboratory, 34, 447  
 National Weather Center, 35, 447  
 National Weather Service Forecast Office, 447  
 National Women's Political Caucus, 417

National Youth Administration, 369  
 Native Americans, *see* Indians.  
 Natsoo Indians, 58  
 natural gas, 26, 324, 338, 421  
 natural resources, 23-31  
 negotiations, 146  
 Nelson, Lauren, 457  
 neutral, 197, 342  
 Neutral Strip, 283  
 New Deal, 366-369  
 New Echota, 128, **p**128  
 New Hope School (Academy), 154, **p**155  
 Newkirk, 300, 339  
 New Spring Place, 257  
 New Wilson, 338  
 NEXRAD Radar Operations Center, 447  
 Nez Perce, 233  
 Nichols, Terry, 443-444  
 Nigh, George P., 437, 438, 461, 496  
 Ninety-Nines, 452  
 Nitakechi, 153  
 NOAA Weather Partners, 447  
 Noble, 12  
 Noble, Lloyd, 338  
 Noble County, 288  
 nomadic, 44  
 No Man's Land, 194, 282, 283-284.  
     *See also* Panhandle.  
 Norick, Ronald, 442  
 normal school, 285  
 Norman, 14, 34, 35, 279, 282, 301, 325, 361, 386,  
     439  
 North Canadian River, 30, 442  
 Northeastern Normal School, 326  
 Northeastern Oklahoma A & M College, 426  
 North Enid, 300  
 North Fork River, 31  
 Northwestern Normal School, 288  
 Northwest Ordinance, 119  
 Northwest Passage, 72, 77, 81  
 Nowata, 456  
 Nuttall, Thomas, **p**106, 107

## O

101 Ranch, 252-253, 344  
 101 Ranch Wild West Show, 252-253, **p**252-253,  
     468, **p**468

Oak Ridge Mission School, 164  
 Office of Inter-Agency Coordination, 415, 419  
 official closing of the frontier in 1890, 285  
 O'Hara, Kelli, 457  
 oil industry,  
     in 1970s, 420-421  
     in 1980s, 438  
     from 1990s to today, 453-454  
     beginnings of, 26, 257, 335  
     and deregulation, 421  
     and economy, 26, 366  
     and embargo, 421  
     and energy crisis, 421  
     fields, 335, 336, 338, 339, 355, 356  
     first wells, 26, 335  
     growth of, 355-356  
     and Indians, 257, 338-339  
     importance of, 26  
     and imported oil, 420  
     jobs in, 336  
     and natural gas, 338, 339, 421  
     and OPEC, 420, 421  
     in postwar periods, 353, 355  
     prices, 344  
     regulation of, 338, 420  
     reserves, 453  
     during World War I, 344  
 Oilton, 336  
 Okemah, 361, 371  
 Okfuskee County, 396  
 Okies, 371  
 Oklahoma,  
     Centennial, 457, **p**457  
     Diamond Jubilee, 439  
     population, 353, 364, 393, 429, 458  
     statehood, 308-317  
*Oklahoma!* (musical play), 391  
 Oklahoma Agricultural and Mechanical (A&M)  
     College, 398  
 Oklahoma Aquarium, 19  
 Oklahoma Baptist University, 326  
 Oklahoma Bureau of Investigation, 356  
 Oklahoma C3 Standards, 451  
 Oklahoma Centennial Land Run Monument, 457,  
     460  
 Oklahoma Center for the Advancement of Science  
     and Technology, 450

- Oklahoma City, 32, 285, **p**305, 329-330, **p**352, 357, 361, 385, 386, 396, 416, 423, 456  
 bombing, 443-445  
 and centennial, 457  
 and desegregation, 411, 412  
 festivals and fairs, 468, 469, 471, 473  
 location, 6, 14  
 and MAPS, 441-443  
 museums, 475, 477, 480, 482  
 and oil industry, 26, 356  
 and railroads, 255, 300, 301  
 and segregation, 326-327, 402,  
 settlement of, 274, 279, 282  
 Oklahoma City Barons, 460  
 Oklahoma City Community College, 426  
 Oklahoma City Museum of Art, 480  
 Oklahoma City National Memorial and Museum,  
 444-445, 480  
 Oklahoma City Thunder, 460  
 Oklahoma City University, 326, 412  
 Oklahoma Climatological Survey, 447, 456  
 Oklahoma County, 273, 282, 285, 288, 371  
 Oklahoma History Center, 22, **p**421, 475, **p**475  
 Oklahoma Indian Affairs Commission, 418, 502  
 Oklahoma Medical Research Foundation, 394, 450  
 Oklahoma Mesonet, 447  
 Oklahoma Mining Company, 256  
 Oklahoma National Guard, 342, 354, 355, 366,  
 387, 449, 452  
 Oklahoma River, 442  
 Oklahoma State Fair, 471  
 Oklahoma State Reformatory, 329  
 Oklahoma State University, 325, 393, 395, 415  
 Oklahoma Territorial Agricultural and  
 Mechanical School, 325  
 Oklahoma Territorial Normal School, 325  
 Oklahoma Territorial University, 325  
 Oklahoma Territory, 282-290  
 establishment of, 282-283  
 government of, 282, 283, 284-285  
 Greer County, 283  
 and Indian Territory, 308  
 and land runs, 276-281, 285-288  
 and statehood proposals, 308  
 Okmulgee, 26, **p**156, 242, **p**304, 305, 361, 386  
 Okmulgee County, 256  
 Olds, Fred, 460
- Omaha Indians, 85  
 Oñate, Juan de, 57, 76-77  
 Oneida Indians, 139  
 Onondaga Indians, 139  
 OPEC, 420, 421  
 Operation Desert Storm, 440  
 Operation Enduring Freedom, 449  
 Opothleyahola, 156, 200, 201, **p**201, 202  
 Orcutt Park, 305  
 ordinance, 326  
 Oreana, 307  
 Organic Act, 282-283, 306, 508  
 Organization of the Petroleum Exporting Countries  
 (OPEC), 420, 421  
 Osage Coal and Mining Company, 257  
 Osage County, 124  
 Osage Hills State Park, 368  
 Osage Indians, 17, 58, 94, 104, 105, 107, 121, 123,  
 124, 146, 232, 259, 271, 290, 339, 356  
 Osage Trace, 179  
 Oscar Rose Junior College, 426  
 Osceola, 137, **p**137  
 Otoe Indians, 85, 289  
 Ottawa County, 27, 306, 422  
 Ottawa Indians, 95  
 Ouachita Mountains region, 21  
 outlaws, 260, 261  
 Owasso, 19  
 Owen, Robert L., 324, **p**325  
 Owens, Steve, 429  
 Ozark Plateau region, 20, **p**20  
 Ozark Trails Association, 340
- P**
- Pacific Islander settlers, 486  
 Pacific Railroad Act, 214  
 Packard site, 47, **p**51  
 Padilla, Friar Juan de, 75  
 Page, Patti, 457, 459  
 Paleo Indian culture, 44-48  
 pandemic, 345  
 Panhandle, 6, 10, 24, 33, 109, 120, 148, 178, 193,  
 194, 219, 370, 456  
 Panhandle State, 326  
 pari-mutuel betting, 437, 438  
 Paris, Treaty of, 95  
 Parker, Bonnie, 373, **p**373

Parker, Cynthia Ann, 229  
 Parker, Isaac C., 260, 261 **p**262, 263, 274, 275  
 Parker, Quanah, 228, 229, **p**229, 230  
 Park Hill Mission, 161  
 parks, 368, 396  
 Parks, Rosa, 411  
 partisan, 362  
 Pauls Valley, 255  
 Pawhuska, 17, 26, 339  
 Pawnee Bill's Wild West Show, 468  
 Pawnee County, 288  
 Pawnee Indians, 85, 232, 286  
 Payne, Andy, 361  
 Payne, David L., 274, **p**274  
 Payne County, 273, 282, 285  
 Payne's Landing, Treaty of, 137  
 peacekeeping mission, 148  
 Pea Ridge, Battle of, 202-203  
 Peck, William, 175  
 Pegg, Thomas, 198, 204  
 pelicans, white, **p**14  
 Penn Square Bank scandal, 438  
 Peoria, 306  
 Peoria Indians, 271  
 Perry, 300  
 Perry Ranch site, 47  
 Perryville, 179, 206  
 Persian Gulf War, 440  
 petrochemicals, 356  
 petroglyphs, 43  
 petroleum, *see* oil industry.  
 Philbrook Museum, 337, 480, **p**480  
 Phillips, Frank A. and L. E., 17, 337, 355  
 Phillips, Leon C., 372  
 Phillips, Waite, 337  
 Phillips, William, 204  
 Phillips University, 326  
 Picher, 306, 422  
 Pickens, T. Boone, 460  
 Pickett, Bill, 252, **p**253  
 Pike, Albert, 198, **p**198, 199, 202, 203  
 Pike, Zebulon, 103, **p**103, 104  
 Pike-Wilkinson expedition, 103-104  
 Pinckney's Treaty, 99  
 pirogue, 102, 110  
 Pitchlynn, Peter, 216, **p**216  
 Pitt, Brad, 459  
 Pizarro, Francisco, 73  
 Plains Apache, 94  
 Plains Village people, 52, **p**52  
 plateau, 20  
*Plessy v. Ferguson*, 326  
 Pogue, William, 427  
 political parties, 327-328  
     Constitutional Union, 195  
     Farmers Alliance, 284  
     Greenback, 284  
     Democratic, 195, 284, 310, 327, 328, 362-363  
     People's, 284  
     Republican, 195, 284, 310, 327, 328  
     Socialist, 284, 326, 327-328, 343  
 politics, 362-363  
 Polk, James K., 173, **p**173  
 Polo, Marco, 70  
 polygamy, 60  
 Pomeroy, Samuel, **p**214, 215  
 Ponca City, 14, 255, 299, **p**304, 386, **p**509  
 Ponca Indians, 85, 232-233, 252, 289  
 Pond Creek, 300  
 Pony Express, 185  
 popular sovereignty, 194  
 population, 327. *See also* Oklahoma population.  
 Port, 23  
 Port of Catoosa, 19, 425  
 Porter, Darrell, 429  
 Porter, Pleasant, 275, 309, **p**309  
 Posey, Alexander, 309  
 Post, Wiley, 358, **p**358, 372, **p**372  
 Potawatomi Indians, Citizen, 231, 285  
 Poteau River, **p**30  
 Pottawatomie County, 285, 288  
 Powell, Susan, 457, 459  
 poultry, 17  
 powwows, 469  
 Prairie Plains region, 19, **p**19  
 Pratt, Horace, 241  
 precipitation, 33, **m**33  
 prehistoric Indian cultures, 42-55  
 price parity, 422  
 Priority Academic Student Skills (PASS), 441, 451  
 progressive movement, 311, 324, 328  
 prohibition, 313-314, 330, 345, 402  
 protégé, 103  
 protohistoric, 54

Pryor, 326, 396  
Pryor, Nathaniel, 108  
Public Land Strip, 194, 283  
Public Works Administration, 367  
Pumpkin Creek site, 49  
Purcell, 276, 386

## Q

Quakers, 226, 228  
Quapaw, 306  
Quapaw Indians, 58, 122, 165, 198  
quarantine, 251  
Quartz Mountain State Park, 368  
Quivara, 74, 75

## R

radio, 361, 395  
Ragtown, 338  
railhead, 246  
railroads  
    routes, 182-183, 255-256, **m**255, 298-301  
    transcontinental, 182, 214, 254, **p**254  
rainfall, 33  
Randall, Tony, 429  
rapport, 227  
Rascal Flatts, 459  
ratify, 101  
ration, 389  
Reconstruction, 211, 215  
recreation, 305  
Red Bed Plains region, 12-14, **p**12, **p**13, **p**14  
redbud, 25, **p**25  
Red Earth Native American Cultural Festival, 459,  
    469, **p**469  
Red Fork, 335  
Redlands Community College, 426  
Red River, 22, **p**22, 29, 31, 106, 110, 283, 366, 372  
Red River Plains region, 22  
Red River War, 228, 230  
Red Rock Canyon State Park, 11  
Reed, Donna, 429  
Reeves, Bass, 261  
referendum, 311, 313  
regions, geographic, 8-22, **m**9  
relocation centers, 388  
Remington Park, 438  
renegades, 107, 228

Renfrow, William, 288, 308, **p**308  
Republican Party, 195, 310  
reservations, Indian, 219, 220, 228  
Resettlement Administration, 368  
Revolutionary War, 97-98, **p**97, **p**98  
Reynolds, Allie, 395  
rider (to legislation), 275  
Rich Mountain, 20  
Ridge, John, 135, 136  
Ridge, John Rollin, 216  
Ridge, Major, 135, **p**135, 136  
Rita Blanca National Grassland, 10  
rivers, 28, 29-31, **m**29, 110-111, 176-177.  
    *See also* specific rivers.  
Riverside Indian School, 245, **p**245  
roads,  
    building, 332, 339-340  
    and Department of Highways, 332  
    early, 124, 184, 340  
    interstate highways, 395, 400, 402  
    toll, 184  
Robbers Cave State Park, 21, 368  
Robert S. Kerr Environmental Research Center, 450  
Robertson, Ann Eliza Worcester, 157, **p**157  
Robertson, Dale, 429  
Robertson, Mary Alice, 362, **p**362  
Rock Church, 154  
Rock Island Railroad, 256, 299, 300  
Rock Mary, 180  
rodeo, 252-253, 467-468, **p**468  
Roger Mills County, 286, 289, 374  
Rogers, John, 160, 163  
Rogers, W. C., 309  
Rogers, Will, 32, 252 **p**361, 362, 372, **p**372  
Rogers County, 256  
Roman Nose, 222  
Roman Nose State Park, 12, 368, **p**368  
Roosa, Stuart, 427  
Roosevelt, Franklin, 366-367, **p**367, 384, 385  
Roosevelt, Theodore, 289, 290, **p**294, 309, 315  
rose rocks, 12, 307  
Rose State College, 426  
Ross, C. C., 314  
Ross, John, 135, 160, **p**160, 162, 163, 198, 203,  
    204, 216, 243  
Ross, Lewis, 257  
Ross, William P., 162, 198, 243



Roulston-Rogers site, 51  
Round Mountain, 200  
Route 66, 360-361, 371, 472  
Rowland, Dick, 354-355  
royalty, 256  
Roy Smith site, 52  
Rural Electrification Administration, 368  
Rushing, Jimmy, 373, **p**373, 374  
Russell, Marian, 219-220

## S

Sac and Fox Indians, 149, 271, 285, 333  
safety and security, secretary of, 495  
Salina, 108, 122, 179, 180  
salt, 27, 104, 105, 306  
Salt Fork River, 31, 105  
Sam Noble Oklahoma Museum of Natural History, 476  
Samuel Roberts Noble Foundation, 450  
Sand Creek Massacre, 219  
Sand Springs, 17  
Sands Rebellion, 242  
Sandstone Hills region, 17, **p**17  
Santa Fe, 77  
Santa Fe Railroad, 255, 299, 300, 359  
Santa Fe Trail, 103, 109, 177-178, 219  
Sapulpa (Oklahoma), 17, 301  
Sasakwa, 241  
Satana, **p**220  
Say, Thomas, 106, **p**106  
Sayre, 439  
Schermerhorn, John W., 139  
School of Mines and Metallurgy, 326  
schools, 394  
    for blacks, 306  
    colleges and universities, 522-523  
    consolidated, 394  
    government, 245  
    higher education, 325-326  
    integration of, 412  
    junior colleges, 423, 426  
    mission, 241  
    normal, 285  
    public, 304, 306, 363  
    specialty, 326  
    subscription, 304  
    technology centers, 423

territorial, 284-285, 304, 306  
vocational-technical, 423.  
*See also* education.  
science and technology, secretary of, 495  
Seabourn, Bert, 459  
Seay, Abraham J., 284, **p**285, 288  
secede, 193, 195  
secretary of state, 494, 495  
Securities and Exchange Commission, 368  
Seger, John, 227  
Seger Indian Training School, 227  
segregation, 244, 306, 326, 393, 398, 402  
Selman Bat Cave, 11  
seminaries, Cherokee national, 244  
Seminole County, 51  
Seminole field, 355-356  
Seminole Indians, 126, 127  
    and allotments, 271  
    after Civil War, 240-241  
    in Civil War, 198  
    and education, 164, 241  
    and freedmen, 244  
    government of, 128, 240, 241  
    in Indian Territory, 163-165  
    removal of, 136-137  
    and slaves, 164  
    in Southeast, 136-137  
    treaties with, 164, 216  
Seminole State College, 426  
senate, state, 312, 498, **p**499, 500  
Senate Bill No. 1, 326  
Seneca Indians, 138, 165, 198, 271  
Sequoyah, 125, 128, 129, **p**129. *See also* Guess, George.  
Sequoyah, State of, 309  
settlers, 92, 484-486  
Seven Sisters, 420  
Shadid, Anthony, 461, **p**461  
shaman, 58  
Shamrock, 336  
Shawnee, 17, 95, 183, 300, **p**300, 326, 386  
Shawnee Indians, 121, **p**121, 198, 285  
shelterbelts, 372  
Shelton, Blake, 457  
Sheridan, Philip, 220-225, **p**222  
sheriff, county, 507  
Shidler, 355

shopping centers, 426  
 Sibley, George Champlin, 15, **p15**, 178  
 Sibley expedition, 104-105  
 Signature Rock, 178  
 Sinclair, Harry F., 336, 355  
 Sioux Indians, 232, 271  
 Sipuel, Ada Lois, 398, **p398**  
*Sipuel v. Board of Regents of the University of Oklahoma*, 398  
 sit-in, 402, 411  
 Skelly, William, 336  
 skirmishes, 74  
 Skullyville, 130, 132  
 SkyDance Bridge, 455  
 slavery, 120, 192-194  
 slaves, 155, 157, 192-194, **p192**  
 slave state, 193, 195  
 Slick, Tom, 336  
 smallpox, 85  
 Smallwood, Norma, 429, 459  
 Smith, J. M. C., 198, 216  
 Smith, Shawntel, 457, 459  
 Smokey, Lois, 369  
 Snyder, 303  
 Socialist Party, 284, 326-328, 343  
 social reform, 329  
 Social Security Act, 368-369  
 soddie, 280-281  
 soil, 11, 12, 14, 23-24  
 Soldier Spring, Battle of, 224  
 Sonic, 396  
 sooners, 275  
 Southard, 27, 303  
 Southeastern Normal School, 326  
 Southern Plains Range Research Station, 450  
 South Oklahoma City Junior College, 426  
 Southwestern Normal School, 288  
 Southwestern Oklahoma State University, 426  
 Soviet Union, 383, 384, 402  
 Space Age, 402-403, 410, 452  
 Spahn, Warren, 395  
 Spain, 56, 72-77, 92-99, 102, 106  
 Spanish flu pandemic, 345  
 Sparks expedition, 102-103  
 Spartan Aircraft Company, 393  
 Spavinaw, 456  
 Speed, Horace, 284  
 Spencer Academy, 154  
 Spiro Mounds State Archaeological Park, 21, **p38-39**,  
 52, **p52**, 53-54, 470, 476, **p476**  
 Springer Amendment, 275  
 squatters, 275  
 Stafford, Thomas, 427, **p427**  
 stagecoach, 183-185  
 Standing Bear, 232-233  
 Standing Bear Park Project, 457  
 Standing Rock, 175  
 Starr, Belle and Sam, 260  
 Star-Spangled Banner, The, 118  
 state, secretary of, 494, 495  
 State Capitol, 14, 27, **p27**, **p320-321**, 330-331, 356,  
 480, **p490**, 504-505, **p504**, **p505**  
 state government, branches of, 312  
 statehood, 308-317  
 state parks, 368, 396  
 states' rights, 192, 193  
 state symbols, 513-514  
 stations, 179, 184, 185  
 steamboats, 22, 111, 177, 206  
 Stecker, 47  
 Steele, George W., 284, **p284**, 288, 306  
 Steen's Buttes, 180  
 Steinbeck, John, 371  
 stickball, 131  
 Stillwater, 14, 274, 279, 282, 325, 386  
 stock market, 364-365, 368  
 Stokes, Montford, 139  
 Stokes Commission, 139  
 Stomp Grounds, 131  
 Storm Prediction Center, 447  
 Stout, Dr. Juanita Kidd, 411  
 strikes, labor union, 257, 353  
 Stringtown, 388  
 Studi, Wes, 459  
 subscription schools, 304  
 subsidies, 368  
 subsistence, 125  
 suburbs, 393  
 suffrage, 313, 345, 416  
 Suggs, Sidney, 332, 339  
 Sulphur, 18, 305, 326  
 superintendent of public instruction, 494, 497  
 supreme court, state, 312, 324, 500, 501-502, **p502**,  
 503

survey, 148, 182, 217  
Swimmer, Ross O., 458  
Switzer, Barry, 429, 457  
syllabary, Cherokee, 128, 129  
symbols, state, 513-514

## T

26th Amendment, 416  
Taft, 326  
Tahlequah, 20, 161, 162, 203, 236-237, 326  
Tahlonteeskee, **p**162  
Talimena Drive, 20, 21, **p**21  
Talimena State Park, 21  
Tallant, 356  
Tallchief, Maria, 375  
Tallchief, Marjorie, 375  
Tallgrass Prairie Preserve, 17, **p**17, 150, **p**151  
Tar Creek Superfund Cleanup Site, 422  
tariff, 192  
Tatum, Lawrie, 225-226, **p**226  
Tawakoni Indians, 58, 147, 165  
taxes, 325  
    ad valorem, 507, 509  
    gasoline, 509  
    income, 325  
    inheritance, 325  
    on natural resources, 325  
    property, 325, 507, 509  
    sales, 372, 509  
    use taxes, 509  
    on utilities, 325  
Teague, Bertha Frank, 417  
technology, 450-451  
technology centers, 423  
Tecumseh, 164, 285  
telegraph, 183, 214  
television, 394  
temperature, 32-33, **m**33  
tenant farmers, 242, 368, 371  
Tener's Western Wear, 373  
territorial government, 284-285  
Territory of Arkansas, 101  
terrorism, 443-445, 448-449  
Texas, 148, 149, 173, 174  
Texas fever, 250  
Texas County, 284  
Texas Road, 173, 179, 199, 250

TG&Y stores, 373  
Thompson, James, 460  
Thorpe, Jim, 333, **p**333  
Three Forks, 31, 107-108, 109, 110  
Three Sands field, 355  
Tiger, Jerome and Johnny, 459  
Tiger Town, 336  
Tillman County, 290  
Tinker, Clarence L., 386  
Tinker Air Force Base, 385, **p**385, 396, 447, 451  
Tishomingo, 27, 158, 160, 326  
Title IX, 417  
Tonkawa, 288, 325  
Tonkawa field, 355  
Tonkawa Indians, 58, 59, 96, 165, 286  
topography, 9  
tornadoes, 34, **f**34, 35, **p**35, 175, 303, 396, 397, 446, 456  
totem, 58  
tourism, 466  
towns, growth of, 278-280  
township, 285  
trade, 68, 80, 82, 85, 92, 107-108, 109  
trading posts, 107-108  
trails, 177-182  
    California Road, 179-180  
    Cherokee, 180  
    early, 177, **m**179  
    Santa Fe, 177, 178  
    Texas Road, 179  
Trails of Tears, **p**114, 126-139, **m**134, **p**136-137.  
    *See also* specific tribes.  
transcontinental railroad, 182, 214, 254, **p**254  
transportation,  
    airplanes, 357-358, 359, 360, 452  
    automobile, 339-340, 360-361  
    railroads, 254-256  
    on rivers, 110-111, 176-177  
    roads, 124, 184, 332, 339-340, 395, 400, 402  
    stagecoach, 183-185  
transportation, secretary of, 495  
treasurer, county, 507  
treasurer, state, 494, 497  
treaty, 95, 118  
    Adams-Onís, 106-107  
    Atoka Agreement, 271  
    of Augusta, 96

of Dancing Rabbit Creek, 132, 153  
of Doak's Stand, 126, 130  
of Hopewell, 98  
of Indian Springs, 133  
Lovely's Purchase, 123  
Medicine Lodge, 220, **p221**  
of New Echota, 135  
of Paris of 1763, 95  
of Payne's Landing, 137  
Pinckney's, 99  
of Pontotoc Creek, 134  
trees, 20, 24, 25  
tribe, *see* Indians, specific tribes.  
tributary, 29  
Tri-State District, 306, 344, 422  
Tsa-La-Gi, 459, 476  
Tsatoke, Monroe, 369  
Tulahassee mission school, 157  
Tulsa, 19, 26, 301, 305, 335, 336, 337, 354-355,  
357, 361, 386, 387, 423  
Tulsa 66ers, 460  
Tulsa Community College, 426  
Tulsa County, 256, 371  
Tulsa Junior College, 426  
Tulsa Oilers, 460  
Tulsa Port of Catoosa, 425  
Tulsa race riot, 354-355, **p354**, **p355**  
Tulsa Shock, 460  
Tulsa University, 326  
Turkey Springs, Battle of, 230  
Turco, El, 74, **p74**  
Turner, Roy J., 399  
Turner Falls, 18, **p18**  
Turner Falls Park, 18  
Turner Turnpike, 395, 399  
Tuttle, 427  
Twin Villages, 103  
Battle of, 59, 94

## U

Unassigned Lands, 273, 274, 275, 278  
Underground Railroad, 194  
Underwood, Carrie, 457, 459  
Union Mission, 161  
universities, 450, 522-523  
University of Central Oklahoma, 325, 451  
University of Oklahoma, 325, 335, 337, 395, 398,

412, 415, 447, 460  
University Preparatory School, 288, 326  
urban sprawl, 441-442  
USS *Oklahoma*, **p384**, 385

## V

Vann, Joseph, 160  
Vance Air Force Base, 386, 451, 452  
vegetation, 24-25  
Verdigris River, 19, 31, 104, 107, 110  
Vespucci, Amerigo, 72  
veterans' affairs, secretary of, 495  
veto, 496  
viceroy, 56  
Vietnam War, 413-415, **m414**  
Vikings, 68, 69  
Vinita, 20, 179, 255, 326, 386  
vital statistics, 512  
vocational-technical schools, 423  
voting, *see* suffrage.

## W

Waco Indians, 58, 147  
Wagoner County, 256  
Walker, Tandy, 205, 206  
Walton, John C., 362-363, **p363**  
Walton, Sam, 426-427  
Wapanucka Institute, 159  
war,  
of 1812, 120  
Civil, 192-207  
Cold, 399-400  
French and Indian, 94-96  
Korean, 399-400  
Mexican-American, 173-174  
Persian Gulf, 440  
Revolutionary, 97-98  
on terrorism, 448-449  
Vietnam, 413-415, **m414**  
World War I, 340, 341-345  
World War II, 382-390  
Warehouse Market, 373  
Warner, 326  
Warning Decision Training Branch, 447  
Warrior, Clyde, 417  
Washington, George, 94, **p94**, **p95**, **p98**, **p99**  
Washington County, 337

Washita, Battle of, 222-224  
 Washita Battlefield National Historic Site, 477  
 Washita County, 286, 289  
 Washita River, 31, 147  
 water resources, 28-31  
 Watie Stand, 135, 136, 198, 199, 202, 203, 204,  
 206, 207, **p**207, 216  
 Watonga, 288, 339  
 Watts, 374  
 Watts, J. C., 429  
 Waugh site, 47  
 Waurika, 339  
 Waynoka, 359  
 weather, 32, 370-371, 374, 396, 446, 447, 456-457  
 WeatherBank, 447  
 Weather Decision Technologies, 447  
 Weatherford, 288, 325, 339  
 weather industry, 34, 447  
 Weathernews Americas, 447  
 Weaver, Dennis, 429  
 Webb, Jimmy, 429, **p**429, 457  
 Webbers Falls, 175  
 Wells, Jerry Lee, 412  
 Western Cherokee, 123, 124, 125, 160, 161  
 Western Oklahoma State College, 426  
 West Shawnee Trail, 250, **m**250  
 Wes Watkins Agriculture Research and Extension  
 Center, 450  
 Wewoka, 17, 164, 240, 241  
 Wharton, 300  
 Wheeler Park, 305  
 Wheelock Academy, 154  
 Whipple, Lt. Amiel W., 182-183  
 Wichita Agency, 228  
 Wichita Indians, 55, 57, **p**58, 59, 74-75, 79, 80, 81,  
 94, 96, 120-121, 146, 198, 289  
 Wichita Mountains National Forest Preserve, 289  
 Wichita Mountains region, 16  
 Wichita Mountain Wildlife Refuge, 16, **p**16  
 Wilburton, 21, **p**307, 326  
 Wild Cat, 163, 164  
 wildcatter, 26, 335, 339  
 wildflower, state, 504  
 wildlife, 10  
 Wildman, 307  
 Wilkinson, Bud, **p**394, 395  
 Wilkinson, General James, 101, **p**102, 103

Wilkinson, James Biddle, 103-104  
 Williams, Robert L., 324, 332, **p**332  
 Will Rogers Downs, 438  
 Wills, Bob, 374  
 Wilson, Charles Banks, 460  
 Wilson, Woodrow, 342, **p**342  
 wind farms, 34, 454  
 women, 345, 387, 389, 400, 416-417  
 Women's Christian Temperance Union (WCTU),  
 313  
 women's suffrage, 313, 345  
 Woodland culture, 50-51, **p**51  
 Woods County, 44, 45, 105, 288  
 Woodward, 11, 35, 305, 396, 397, 421  
 Woodward, Neil, 428  
 Woodward County, 47, 288, 397  
 Woolaroc Museum and Wildlife Preserve, 17, 337,  
**p**337, 470, 480, **p**482  
 woolly mammoth, **p**46  
 Worcester, Samuel, 128, 129, 135, 161  
 worker's compensation, 332  
 working conditions, 313  
 Works Progress Administration (WPA), 369  
 World War I, 340, 341-345  
 World War II, 382-390  
 Wright (formerly Bismarck), 343  
 Wright, Alfred and Harriet, 154  
 Wright, Allen, 216, 242, **p**242  
 Wright, Muriel, 460  
 Wyandot Indians, 165

## Y

Yale, 361  
 Yukon, 14

## Z

zinc, 306, 344, 357, 422  
 Zodletone Resort, 305

# Acknowledgments

**PICTURE CREDITS:** The following abbreviations are used for the sources from which several illustrations were obtained.

CC	Creative Commons
LC	Library of Congress
LSB	Legislative Services Bureau, Oklahoma State Capitol
NARA	National Archives and Records Administration
OHS	Oklahoma Historical Society
OT	Oklahoma Tourism
PD	Public Domain
RL	Reggie Lankford
WC	Wikimedia Commons

**COVER:** (all) Reggie Lankford. **FRONT:** i Reggie Lankford. ii-iii Reggie Lankford. iii (inset) LSB. v LSB. vi-1 Reggie Lankford. **CHAPTER ONE:** 2-3 Reggie Lankford. 4 Reggie Lankford. 8 Reggie Lankford 10 Jimmy Emerson/CC. 11 (above) WC; (below) Reggie Lankford. 12-13 (both) Reggie Lankford. 14 (above) Reggie Lankford; (below) OT. 15 (above) OT; (below) PD. 16 WC. 17 (above) Robin McDonald; (below) OT. 18 (above) Reggie Lankford (below) Reggie Lankford. 19 Reggie Lankford. 20 (above) WC; (below) Robin McDonald. 21 WC. 22 Henley Quadling/CC. 23 Reggie Lankford. 24 (both) Reggie Lankford. 25 Reggie Lankford. 26 Robin McDonald. 27 Robin McDonald. 28 Reggie Lankford. 29 Reggie Lankford 30 (above) Robin McDonald; (below) OT. 31 Robin McDonald. 32 Reggie Lankford. 35 Justin Hobson. **CHAPTER TWO:** 38-39 Oklahoma Archaeological Society. 40-41 Oklahoma Archaeological Society. 42-43 (all) Oklahoma Archaeological Society. 45 Painting by Patrick Brady. 46 (above) Pinson Mounds State Archaeological Area, Tennessee; (below) Oklahoma Archaeological Society. 47 Robin McDonald. 48 Pinson Mounds State Archaeological Area, Tennessee. 49 Illustration by Cherry Bishop. 51 (above) Oklahoma Archaeological Society; (below) Pinson Mounds State Archaeological Area, Tennessee. 52

(both) Oklahoma Archaeological Society. 53 Pinson Mounds State Archaeological Area, Tennessee. 54 (both) Reggie Lankford. 55 (above) Reggie Lankford; (below) Oklahoma Archaeological Society. 56 Robin McDonald. 57 Robin McDonald. 58 Robin McDonald. 59 Robin McDonald. 60 (both) Robin McDonald. 61 WC. **CHAPTER THREE:** 64-65 LC. 66-67 LC. 68 LC. 69 Robin McDonald. 70 LC. 71 (above) Architect of the U.S. Capitol; (below) LC. 73 (both) LC. 74 LC. 75 Eduardoasb. 76 Architect of the U.S. Capitol. 78 (both) LC. 79 Robin McDonald. 80 Corbis. 81 Jamestown-Yorktown Foundation. 82 LC. 83 National Museum of American Art. 84 LC. 85 Corbis. **CHAPTER FOUR:** 88-89 Robin McDonald. 90-91 Robin McDonald. 92 Jamestown-Yorktown Foundation. 94 PD. 95 (both)LC. 97 LC. 98 (above) LC; (below) Architect of the U.S. Capitol. 99 Architect of the U.S. Capitol. 100 (above) PD; (right) Historic New Orleans Collection. 102 (both) PD. 103 (both) LC. 105 (both) LC. 106 (both) LC. 107 Robin McDonald. 108 (above) Robin McDonald; (below) OHS. 109 LC. 110 Robin McDonald. 111 (above) Filson Club; (below) LC. **CHAPTER FIVE:** 114-115 Woolaroc Museum, Bartlesville. 116-117 Woolaroc Museum, Bartlesville. 118 LC. 119 LC. 120 LC. 121 LC. 122 (above) LC; (below) Reggie Lankford. 123 (both) Reggie Lankford. 125 Robin McDonald. 126 LC. 127 Reggie Lankford. 128 (above) Robin McDonald; (below) Reggie Lankford. 129 LSB. 130 Joslyn Art Museum, Omaha, Nebraska. 131 LC. 132 LC. 133 LC. 135 LC. 136-137 OHS. 137 (both) LC. 139 LC. **CHAPTER SIX:** 142-143 Robin McDonald. 144-145 Robin McDonald. 146 LC. 147 PD. 148 OT. 149 LC. 150-151 LC. 151 (above) WC. 152 Joslyn Art Museum, Omaha, Nebraska. 153 OHS. 154 (both) OHS. 155 (both) OHS. 156 (both) OHS. 157 OHS. 158 (above) OHS; (below) LC. 160 (above) OHS; (below) LC. 161 Robin McDonald. 162 (both) Robin McDonald. 163 LC. 164 OHS. 165 OHS. **CHAPTER SEVEN:** 168-169 LSB. 170-171 LSB. 172 PD. 173 Tennessee State Museum. 174 LC. 175 PD. 176 LC. 177 State Historical Society of Missouri. 180 LC. 182 OHS.

183 OHS. 184 LSB. 185 LC. **CHAPTER EIGHT:** 188-189 Oklahoma State Senate Historical Preservation Fund, Inc. 190-191 Oklahoma State Senate Historical Preservation Fund, Inc. 192 LC. 195 LC. 196 (both) LC. 197 Robin McDonald. 198 LC. 199 PD. 201 LC. 203 (both) LC. 204 LC. 205 (above) LC; (below) OHS. 206 LC. 207 LSB. **CHAPTER NINE:** 210-211 Thomas Gilcrease Museum of American Art and History, Tulsa. 212-213 Thomas Gilcrease Museum of American Art and History, Tulsa. 214 LC. 215 OHS. 216 LC. 217 OHS. 218 LC. 219 LC. 220 OHS. 221 LC. 222 (both) LC. 223 LC. 224 LC. 225 Robin McDonald. 226 OHS. 228 (above) WC; (below) LC. 229 OHS. 230 OHS. 231 LC. 232 (both) Robin McDonald. 233 (both) LC. **CHAPTER TEN:** 236-237 Reggie Lankford. 238-239 Reggie Lankford. 240 LC. 241 OHS. 242 OHS. 243 OHS. 244 OHS. 245 LC. 246 LC. 247 LSB. 248-249 LC. 249 (above) PD. 251 (above) LC; (below) OHS. 251 (below) OHS. 252-253 LC. 253 (above) PD; (below) LSB. 254 (above) LC; (below) PD. 256 OHS. 257 OHS. 258 OHS. 259 OHS. 260 LC. 261 OHS. 262 (above and below right) Robin McDonald; (below left) LC. 263 Robin McDonald. **CHAPTER ELEVEN:** 266-267 LSB. 268-269 LSB. 270 LC. 271 OHS. 272 (both) OHS. 273 (above) LC; (below) OHS. 274 (above) OHS; (below) LC. 275 OHS. 276 (below) LC. 276-277 OHS. 277 (below) OHS. 278 OHS. 279 OHS. 280 (above) LSB; (below) OHS. 281 LSB. 282 OHS. 284 (all) OHS. 285 OHS. 286-287 (all) OHS. 288 OHS. 289 OHS. 291 (both) Lawton Heritage Association. **CHAPTER TWELVE:** 294-295 LSB. 296-297 LSB. 298 OHS. 299 OHS. 300 (below) OT. 300-301 LC. 301 (below) Robin McDonald. 302 LC. 303 LC. 304 (both) OHS. 305 OHS. 306 (below) Robin McDonald. 306-307 LC. 307 (below) OHS. 308 OHS. 309 OHS. 310-311 OHS. 312 (above) OHS; (below) LC. 313 LC. 314 OHS. 315 OHS. 316 RL. 317 OHS. **CHAPTER THIRTEEN:** 320-321 Robin McDonald. 322-323 Robin McDonald. 324 OHS. 325 (above) OHS; (below) NARA. 326 LSB. 327 OHS. 328 (both) OHS. 329 OHS. 330 OHS. 331 (both) OHS. 332 OHS. 333 LSB. 334-335 OHS. 336 OHS. 337 (both) Reggie Lankford. 338 OHS. 339 OHS. 340 OHS. 341 (both) LC. 342 (above) LC; (below) OHS. 343 Robin McDonald. 344 (both) OHS. 345 LC. **CHAPTER FOURTEEN:** 348-349 OHS. 350-351 OHS. 352 OHS. 353 (above) LC; (below) OHS. 354 OHS. 355 OHS. 356 OHS. 357 OHS. 358 OHS. 359 (both) WC. 360 OHS. 361 OHS. 362 (above) LSB; (below) OHS. 363 (both) OHS. 364 WC. 365 LC. 366 OHS. 367 Atlanta Historical Society.

368 OT. 369 OHS. 370 OHS. 371 (above) OHS; (below) LSB. 372 (above) LSB; (below) Reggie Lankford. 373 (above) WC; (below) LC. 374 LC. 375 Reggie Lankford. **CHAPTER FIFTEEN:** 378-379 LSB. 380-381 LSB. 382 LC. 383 LC. 384 (both) WC. 385 OHS. 386 LC. 387 LC. 388 OHS. 389 (both) LC. 390 (both) LC. 391 Corbis. 392 Atlanta Historical Society. 393 OHS. 394 (above) OHS; (below) LSB. 395 LC. 396 WC. 397 Corbis. 398 LSB. 399 OHS. 400 (above) LC; (below) OHS. 401 OHS. 402 Corbis. 403 NASA. **CHAPTER SIXTEEN:** 406-407 Currie Ballard. 408-409 Currie Ballard. 410 (both) WC. 411 Currie Ballard. 412 Currie Ballard. 413 NARA. 414 NARA. 415 (above) U.S. Navy; (below) LC. 416 NARA. 417 LC. 418 Americans for Indian Opportunity. 419 Corbis. 420 WC. 421 Reggie Lankford. 423 Robin McDonald. 424-425 Robin McDonald. 426 (above) Robin McDonald; (below) Reggie Lankford. 427 NASA. 428 (both) NASA. 429 (above) WC; (below) CC. **CHAPTER SEVENTEEN:** 432-433 Reggie Lankford. 434-435 Reggie Lankford. 436 (above) WC; (below) LSB. 437 (above) LSB; (below) WC. 439 Reggie Lankford. 440 WC. 441 Reggie Lankford. 442 Reggie Lankford. 443 Robin McDonald. 444 (above) WC. 444-445 LC. 445 (above) LC; (below) Robin McDonald. 446 (both) FEMA. 447 NOAA. 448 WC. 449 (both) WC. 450 WC. 451 (above) Oklahoma State Department of Education; (below) Robin McDonald. 452 U.S. Air Force. 453 (above) Reggie Lankford; (below) WC. 454 Reggie Lankford. 455 Reggie Lankford. 456 (both) OT. 457 Michael Wallace/CC. 458 Corbis. 459 (above) Steve Jurvetson/CC; (below) WC. 460 (above) CC; (below) WC. 461 Shankbone. **CHAPTER EIGHTEEN:** 464-465 Reggie Lankford. 466 Reggie Lankford. 467 OT. 468 (above) LC; (below) OT. 469 (above) Red Earth Festival/CC; (below) Robin McDonald. 470 (both) RL. 471 OT. 472 OT. 473 OT. 475 (both) RL. 476 (above) WC; (below) RL. 477 (above) RL; (below) Melissa Baldwin/CC. 478 RL. 479 (above) RL; (below) Robin McDonald. 480 (above) RL; (below) Wolfgang Sauber/CC. 481 Robin McDonald. 482 (both) RL. 483 Red Earth Festival/CC. 484 OT. 485 (both) Robin McDonald. 486 Robin McDonald. 487 (above) WC; (below) Robin McDonald. **CHAPTER NINETEEN:** 490-491 Robin McDonald. 492-493 Robin McDonald. 494 LSB. 495 (above) LSB; (below) PD. 497 (Both) LSB. 498 RL. 499 RL. 500 LSB. 501 RL. 502 Erin McGregor. 503 Stu Ostler. 504 RL. 505 RL. 506 CC. 508 Reggie Lankford. 509 Reggie Lankford. **APPENDICES:** 513 (left and center) OT; (right) LSB. 514 (all) Robin McDonald.





